

ANCIENT OIL LAMPS FROM AEGYSSUS (2ND CENTURY BC – 7TH CENTURY AD)

Vlad CIUR

“Gavrilă Simion” Eco-Museum Research Institute, Tulcea, Romania
ciurvlad@gmail.com
ORCID ID: 0009-0005-3320-8128

Gabriel-Ionuț GRUMĂZESCU

“Gavrilă Simion” Eco-Museum Research Institute, Tulcea, Romania
gabrielgrumazescu97@gmail.com
ORCID ID: 0009-0005-3096-813X

Abstract: In this paper, the authors will present a batch of ancient oil lamps discovered during the excavations conducted in the archaeological site of Aegyssus, located underneath the Monument Park, on the Hora hill, in modern day Tulcea, Romania. In total, 50 lamps and lamp fragments from the collection of the History and Archaeology Museum of Tulcea were studied and presented individually in a catalogue, alongside information regarding their morphology, typology and chronology, as well as cultural and economic aspects related to their discovery, correlating them with other relevant findings from the region. The lamps that will be analysed in this study date between the 2nd century BC and the 7th century AD. The batch consists of 16 different types, including less common ones in the area. Both regional and imported products from various regions of the ancient world were identified, with some specimens bearing the production marks. The iconographical repertoire of these lamps is also varied, with multiple representations.

Rezumat: În acest articol, autorii vor prezenta un eșantion de lămpi antice descoperite în timpul cercetărilor efectuate în situl arheologic Aegyssus, localizat sub Parcul Monumentului, pe Colnicul Hora, în actualul oraș Tulcea, România. În total, 50 de lămpi și fragmente de lămpi din colecția Muzeului de Istorie și Arheologie din Tulcea au fost studiate și prezentate individual într-un catalog, alături de informații despre morfologia, tipologia și cronologia acestora, precum și aspecte culturale și economice legate de prezența lor la Aegyssus, corelându-le cu alte descoperiri relevante din regiune. Lămpile care vor fi analizate în acest studiu sunt datate între sec. al II-lea a.Chr. și sec. al VII-lea p.Chr. Eșantionul cuprinde 16 tipuri diferite, incluzând unele mai puțin comune în zonă. Atât produse regionale și importuri din zone variate ale lumii antice au fost identificate, unele dintre exemplare având și mărci de producție. Repertoriul iconografic al lămpilor este de asemenea unul variat, cu numeroase reprezentări.

Keywords: Ancient lamps, Aegyssus, Moesia Inferior, Scythia, ancient trading

Cuvinte cheie: Lămpi antice, Aegyssus, Moesia Inferior, Scythia, comerț antic

INTRODUCTION

Situated on the Lower Danube near the Delta (Fig. 1), the ancient site of Aegyssus was one of the many Roman strongholds in the nowadays Dobruja region, a territory situated at edge of the imperial administration and also at the conjunction of Western and Eastern cultures and civilizations. The fortress now lies underneath the

Monument Park, on the Hora hill, in the modern town of Tulcea (Fig. 2), where sporadic archaeological excavations were conducted between 1971 and 1995, being resumed and still ongoing from 2015.

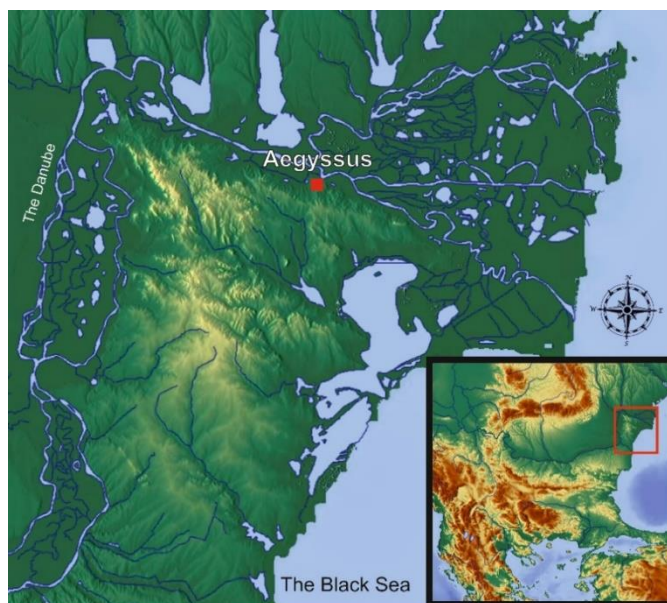


Fig. 1. Geographical location of *Aegyssus*

The Roman poet Ovid, during his exile at Tomis, described the fortress now located on the Hora hill as *vetus urbs*, meaning old town¹, and wrote about an attack of the Getic population, indigenous to the region, and the intervention of the Roman troops under the command of his friend, P. Vitellius, that took place in the year 12 AD². On the occasion of this event, the participation of the Roman fleet in a conflict in this region is also mentioned for the first time³, and the discovery of two bricks stamped with the initials of the fleet (CLFM)⁴ further emphasize the strategic importance of *Aegyssus*.

After the Roman conquest, *Aegyssus* played an important role in the defensive system in the region, being one of the numerous fortified settlements on the Lower Danubian *limes*. Initially, *Aegyssus* was part of the province of Moesia, and following the administrative reform under the emperor Domitianus, it was integrated into the

¹ Ovid, I, 8, 11-20.

² Ovid, IV, 7, 27-28.

³ Matei-Popescu 2010, 245.

⁴ Gudea 2005, 460; Nuțu 2018, 204.

newly formed Moesia Inferior. At the end of the 3rd century AD, new reforms once again reshaped the administrative configuration of the provinces, and Aegyssus was afterwards part of the Scythia province, in which it stayed until the end of Roman political control, during the 7th century AD.

The strategic position on the Danube, as well as the ever-present threat of the populations from the other bank of the river, require a constant need for a strong defence, therefore several military units were dispatched at Aegyssus during the Roman occupation in the area. At this moment, archaeological and epigraphic sources confirm the presence, besides the fleet troops mentioned above, of detachments belonging to *Legio V Macedonica* (2nd century AD)⁵, *cohors II Flavia Brittonum* (second half of the 3rd century AD)⁶ and a to a *vexillatio* of *Legio I Jovia* (the beginning of 4th century AD)⁷. During the older excavations, an ivory sword hilt and a shield umbo were discovered inside a large building that could have functioned as the headquarter of a local garrison in the southern part of the fortress⁸, thus offering further insights into the military presence at Aegyssus as well as important details regarding the urban planning of the settlement.



Fig. 2. Aerial photograph of the Monument Park (after Mocanu, Nuțu 2017)

⁵ Nuțu 2018, 203.

⁶ Opaîț 1981, 297-298.

⁷ Barnea 1950, 175-184.

⁸ Nuțu 2018, 205-212.

In spite of numerous attacks in the region, economic and social turmoil, and of political disputes, the Roman control over Aegyssus and its surroundings lasted for seven centuries, a timeframe in which the local communities also experienced notable periods of peace and prosperity, granted by their position as part of the Empire. Thus, besides the dangers of being a fortress near the often-hostile *Barbaricum*, the geographic location of Aegyssus played an important role in the overall development of the settlement. The access to fluvial and maritime trading routes facilitated the import of goods from both the Western and Eastern markets of the Empire and also opened the local population to cultural and economic influences, aspects that can be observed through the material culture, including the subject of this current paper, the ancient oil lamps.

These lamps were discovered during the several archaeological campaigns that took place inside the city walls, as well as during the preventive excavations undertaken throughout different points located in the modern town of Tulcea. In the case of most of the lamps from the older excavations, which represents the majority of the specimens in this catalogue, meaningful information about their discovery is lacking, thus we are unable to correlate them with a certain archaeological context. Lamps from the recent excavations come mainly from two points inside the fortress, *Area B* and *Area C*, where important discoveries regarding the urban development, the economic ties of the settlement and the administrative and military organization of the fortress were made so far⁹.

The lychnological material belongs to a wide chronological range, dated between the 2nd century BC and the 7th century AD, corresponding to the habitation of the area from the Hellenistic age to the collapse of Roman political control. As the archaeological information about the habitation during the Hellenistic era is rather scarce¹⁰, the lamps presented in this paper represent a relevant source of information for this specific historical period. As discussed above, the Roman occupation of the region, between the beginning of the 1st century until the 7th century AD, is clearly better attested than the previous habitation, thanks to the various historical and archaeological sources, although the urban development of modern Tulcea greatly undermines the further efforts of extensive research.

In order to elaborate a comprehensive perspective on the selected material, the 50 lamps and lamp fragments that are the subject of this study will be listed and

⁹ For an up-to-date overview on the results of excavations conducted in *Area B* and *Area C* see Nuțu et al. 2023, 422-424.

¹⁰ Currently, the most relevant discoveries of Hellenistic period from *Aegyssus* are the findings from a biritual necropolis, located on Nalbelor street, where two specimens presented in this article (cat. nos. 1-2) were found (see Lungu 1996), and the amphorae deposit discovered during excavations inside the city walls (see Opaț 1987).

described in a catalogue. It will be followed by a more in-depth discussion with the goal of enriching the current understanding about the circulation of various ancient lamp types into this particular area and to offer new perspectives regarding cultural and economic aspects linked to their presence at Aegyssus. The catalogue will be divided into three chronological groups, based on the dating of every specimen, as well as in sixteen typological categories, corresponding to every type of lamps identified.

CATALOGUE¹¹:

A. Hellenistic Period (2nd – 1st centuries BC):

I. Howland Type 40 A

Lamps of this type are also known as “Knidian” lamps, referring to the numerous specimens discovered during the archaeological excavations conducted at *Knidos*, in *Asia Minor*¹². From a morphological standpoint, these lamps are various, with or without handles and with one or multiple nozzles. Some of them also bear different iconographical motives, generally of vegetal or geometric inspiration, or even more complex ones such as mythological characters¹³. The closest analogy from the region for our lamp is one specimen found in the necropolis of *Tomis*¹⁴.

1. Complete lamp; inv. no. 42203 (Fig. 3/1).

Dimensions: L = 10 cm; D = 6 cm; H = 3 (4.9) cm; Dd = 3 cm; Db = 3.3 cm; Dfh = 1 cm; Dwh = 1.8 cm.

Description: Bitronconic shape, circular and concave discus, with a centrally placed filling hole, marked by a bridged groove. Inclined shoulder, with an unpierced protuberance. Elongated tubular nozzle, ending in an anchor shape, with an ovoidal wick hole. Strap-like elevated handle. Raised flat base. The specimen is wheel-made. The fabric is fine, with mica and limestone inclusions, of light gray colour (5YR 7/1). The slip is of good quality, partially preserved, of dark grey colour (10YR 4/1).

Context: Aegyssus 1989, Nalbelor street, M 2.

Dating: First half of the 2nd century BC.

Origin: Import (Knidos).

Bibliography: Lungu 1996, 58, no. 17 p. 96, Pl. V/17.

¹¹ Catalogue abbreviations: inv. no. = inventory number; L = length; Lp = preserved length; D = diameter; Dp = preserved diameter; H = height; Hp = preserved height; Dd = discus diameter; Db = base diameter; Dfh = Filling hole diameter; Dwh = Wick hole diameter.

¹² Bailey 1975, 124-125; Howland 1958, 126.

¹³ For the various morphological variants and decorations found on lamps of this type see Bailey 1975, 124-159, Pl. 46-71.

¹⁴ Bucovaľ 1967, 128, Grave CDXXXIV, Type II, Fig. 85.

Analogies: Bailey 1975, 124-159, Q277-283; Broneer 1930, 53, Type XIII; Bucovaia 1967, 128, Type II, Fig. 85; Howland 1958, 126, Type 40 A; Iconomu 1967, 8, tip IV.

II. Handmade lamps

While the above-described lamp constitutes evidence for the commercial ties between *Aegyssus* and *Asia Minor* production centres, the second one (cat. no. 2) represents a locally or regionally made product, perhaps an imitation of an original Greek import. Despite the rather poor quality of this particular specimen, it represents an expression of the external cultural influences found in the regional production of goods. The lamp was discovered alongside a bronze mirror, a Campanian bowl and one Rhodian stamped amphora¹⁵.

2. Complete lamp, restored; inv. no. 42206 (Fig. 3/2).

Dimensions: L = 16.70 cm; D = 7.3 cm; H = 6.5 cm; Dfh = 4 cm; Dwh = 2.3 cm.

Description: Large globular reservoir, narrowing towards the filling hole. Elongated tubular nozzle, ending in a relatively large wick hole with soot traces from usage on it. The filling hole is broad, substituting the discus. Annular thick handle. Handmade lamp, rather inferior quality execution, unequally fired clay. Coarse fabric, with limestone and rare mica particles, of light yellowish brown (2.5Y 6/3) colour.

Context: Aegyssus 1989, Nalbelor street, M 1.

Dating: First half of the 2nd century BC.

Origin: Regional/local product.

Bibliography: Lungu 1996, 58, no. 19, Pl. V/17.

Analogies: Bailey 1975, I, Q 706.

III. Howland Type 49A lamps

The third Hellenistic specimen in our catalogue belongs to a type of lamps presented by Howland under his 49A type¹⁶, often referred to as "Ephesian lamps" due to the large number of such findings in the area of ancient *Ephesus*. These lamps have circulated between the 2nd century BC and the beginning of the 1st century AD¹⁷. They have a circular reservoir, with an elongated nozzle, either rounded or angular. The shoulder of this type is inclined and narrow, decorated with a wide range of motifs¹⁸. Another characteristic is the flat discus, surrounded by a raised collar in order to avoid the spilling of the oil while the lamp is filled¹⁹.

¹⁵ Lungu 1996, 53-54, 58, grave no. 1, cat. nos. 15, 16, 18.

¹⁶ Howland 1958, 166-169, Type 49A, Pl. 49.

¹⁷ Howland 1958, 166.

¹⁸ For the various decorations found on lamps of this type see Bruneau 1965, 55-56.

¹⁹ Howland 1958, 166.



Fig. 3

The fragment (cat. no. 3) was discovered during public works conducted inside the park located on the Monument Hill in the winter of 1976. On this occasion, a deposit of Pseudo-Kos amphorae, dating between the 1st century BC and the 1st century AD, was also discovered²⁰. Since we do not possess more insightful information regarding the archaeological context of the finding, we cannot establish a certain relation between the deposit of amphorae and the lamp fragment, besides the fact that both discoveries were made in the same year, and they date from approximately the same period. A lamp with identical fabric, slip and decoration with our fragment was found in the necropolis of *Tomis*, with the mark *BA* (the *B* is mirrored)²¹, thus the possibility of them being produced in the same centre is a very likely one.

²⁰ Opaït 1987.

²¹ Iconomu 1967, 54, no. 153, Fig. 81.

3. Fragmentary lamp, parts of the nozzle and of the shoulder are preserved (Fig. 3/3).

Dimensions: Lp = 5 cm; Dp = 2.7 cm.

Description: Slightly concave and bridged discus, partially preserved. Narrow shoulder, decorated with herringbone-like motif, with two globules at the ending. The nozzle channel is decorated with a motif resembling a flower. Angular nozzle. Fine fabric, with mica particles, of light red (2.5YR 6/8) colour. Good quality slip, evenly applied, of dark reddish brown (2.5YR 3/4) colour.

Context: Aegyssus 1976, N8, □XIII.

Dating: 2nd century BC – the beginning of the 1st century AD.

Origin: Import (Asia Minor?).

Bibliography: Unpublished.

Analogies: Bruneau 1965, 73, no. 2996, Pl. 17; Iconomu 1967, 54, no. 153, Fig. 81.

B. Early Roman Period (1st – 3rd centuries AD):

IV. Loeschcke Type IV lamps

The earliest products of the Roman lamp-making workshops were heavily influenced and inspired by Hellenistic specimens, an aspect observable especially on the Early Roman voluted lamps, a category to which belong two of the lamps in our catalogue belong to (cat. nos. 4-5). S. Loeschcke divides these lamps into two types, IV and V, based on the variant of the volutes: double-headed or single-headed²². Based on the analogies given in the catalogue, we can appreciate that cat. no. 4 is of Loeschcke's type IV, while the cat. no. 5 belongs to Type V. In the case of the cat. no. 4, the Hellenistic influences are clearly observable through shape and decoration²³.

The rather poor quality of execution of our cat. no. 4 may indicate a provincial/regional origin, being likely an imitation of an imported product. The production of voluted lamps in Moesia Inferior is attested by the discovery of moulds used in their manufacture in the territory of Nicopolis ad Istrum, at Pavlikeni, in Bulgaria²⁴. Unfortunately, due to the poor state of preservation of the second lamp fragment of this type (cat. no. 5) we are not able to offer a more detailed description other than the fact that it is likely an import, of unknown origin.

4. Partially preserved, the nozzle is missing; inv. no. 25186 (Fig. 4/4).

Dimensions: Lp = 5.9 cm; Dp = 5.5 cm; H = 2.5 (3.6) cm; Dd = 2.3 cm; Db = 3 cm.

Description: Round reservoir, slightly flattened and elongated towards the nozzle. Small and concave bridged discus, with a centrally placed filling hole. Broad inclined shoulder, decorated by a vegetal motif, resembling a laurel (or olive leaves?) wreath. Lamellar, pierced handle. Circular base, marked by a *planta pedis*. On the nozzle channel the upper

²² Loeschcke 1919, 37-44, Types IV and V.

²³ See Broneer 1930, 61-60, Type XVIII, Fig. 27.

²⁴ Владкова 2011, 122, кат. но 8, 10.

part of a volute pair can still be observed. The specimen was made with worn out moulds, as the decoration is poorly impressed. Fine fabric, with rare limestone and mica inclusions, of light red (2.YR 7/8) colour. Partially preserved slip, of red (10R 5/8) colour.

Context: Aegyssus 1980, M2a, N3, B room.

Dating: Second half of the 1st century – first half of the 2nd century AD.

Origin: Provincial/ regional workshop.

Bibliography: Unpublished.

Analogies: Baumann 2009, 232, no. 36, Fig. 5, Pl. 7; Čičikova 1987, 158, no. 31, Pl. IV; Iconomu 1967, 58, no. 176, Fig. 89; Кузманов 1992, 21, кат. но. 78; Кузманов, бѣчваров 1986, 44-45, кат. но. 6, Табл. I; Mușețeanu, Elefterescu 1983, 118, nos. 8-9, Fig. 1; Торбов 2022, 115, no. 8, Табл. V/8.

5. Fragmentary, the nozzle is preserved; inv. no. 2691 (Fig. 4/5).

Dimensions: Hp = 2.3 cm; Dwh = 1 cm.

Description: Ogival nozzle, decorated with a pair of rather poorly impressed volutes. Soot traces around the wick hole. Fine fabric, with rare limestone particles, of red (2.5YR 5/8) colour. The slip is of red (2.5YR 4/8) colour, unevenly applied.

Context: *Passim*.

Dating: 1st century – first half of the 2nd century AD.

Origin: Provincial/regional workshop (?).

Bibliography: Unpublished.

Analogies: Baumann 2009, 232, no.35, Fig. 5; Čičikova 1987, 158, no. 32, Pl. IV-V; Кузманов 1992, 21, кат. но. 80; Кузманов, бѣчваров 1986, 44-45, no. 6, Табл. I; Mușețeanu, Elefterescu 1983, 118, no. 7, Fig. 1.

V. Loeschcke Type IX lamps

One lamp from the catalogue corresponds with Loeschcke's Type IX (cat. no. 6). It was discovered during the excavations inside the city walls, in an archaeological layer beneath a thermal edifice, dated between the end of the 1st century and the first half of the 2nd century AD²⁵. Lamps of this type are characterized by a round reservoir, with an elongated nozzle with a bridged, closed channel²⁶. The closed channel differentiates this lamp from the Loeschcke's Type X, which have circulated far more in the region than the former variant, with one such specimen discovered in the extramural area of Aegyssus²⁷. Both Loeschcke Type IX and Type X, also referred to as *Firmalampen* (factory lamps) due to the stamps of the producers often found on the base of the lamps, are mainly associated with military sites, especially in the newly conquered regions²⁸. They were originally produced in Northern Italy,

²⁵ Opaïț, Sion, Vasiliu 1980, 268-269, Fig. 7/2.

²⁶ Loeschcke 1919, 67, Type IX.

²⁷ Ciur 2024, 203, no. 10, Fig. 4.

²⁸ Chrzanovski 2020, 217.

at the beginning of the 1st century AD, eventually being copied throughout the Empire, including in *Moesia Inferior*²⁹. The overall poor quality of execution indicates that this specimen is an imitation, possibly made in a nearby or a regional centre.

6. Complete lamp; inv. no. 24533 (Fig. 4/6).

Dimensions: L = 7.9 cm; D = 5.2 cm; H = 2.8 cm; Dd = 2.9 cm; Db = 3.5 cm.

Description: Round body, elongated towards the nozzle. Circular bridged discus, with a centrally placed filling hole, slightly affected. Narrow shoulder, with two raised lateral lugs. A closed bridged channel is on the nozzle, between the discus and wick hole. Slightly convex ring-base. Overall poor quality of execution. Fine fabric, of light red (2.5YR 6/8) colour. Partially preserved slip, of red (10R 5/8) colour.

Context: Aegyssus 1980, M 2 n (?), Sondaj N3.

Dating: The end of the 1st century – first half of the 2nd century AD.

Origin: Provincial/ regional product.

Bibliography: Opaț, Sion, Vasiliu, 1980, 268, Fig. 7/2; Paraschiv 2012, 250, cat. no. 382.

Analogies: Čičikova 1987, 166, no. 114, Pl. XIII; Frecer 2015, 117, λ 44; Loeschcke 1919, Typus IX; Topčov 2022, 143, no. 234, Табл. XV/4.

VI. Loeschcke Type VIII lamps

Seven specimens from our catalogue (cat. nos. 7-13) are equivalent to Loeschcke's Type VIII³⁰, the most commonly found lamps from the Early Roman period in the region. The long lengthy circulation of this type, between the end of the 1st century and the 4th century AD, resulted in a great variety in the morphology and decoration of these lamps, which can be observed on the lot from *Aegyssus*. Cat no. 7 has a four-petal rosette on the discus, and a *planta pedis* incised mark on the base. The specimen is made out of a good quality fabric, with limestone and mica inclusions, of red colour. The slip is also of good quality, evenly applied, of similar colour. Based on these characteristics, this specimen is more likely to be an imported product. In contrast, cat. no. 8 has visible production errors, thus alluding to a rather provincial/regional origin, although we do not exclude the possibility of it being produced elsewhere.

Another representation of a sixteen-petal rosette is depicted on cat. no. 10, this time with impressions towards the edge of the discus, while the shoulder is decorated with a row of leaves and the nozzle is flanked by tendril-like motifs. Identical lamps with this one were found throughout the North-Eastern part of *Moesia Inferior*, at Barboși³¹, Callatis³², Carsium³³, Histria³⁴, Noviodunum³⁵, Stejaru³⁶

²⁹ Chrzanovski 2020, 237.

³⁰ Loeschcke 1919, 49- 66, Type VIII.

³¹ Croitoru 2017, 94-95, no. 11, Fig. 3; Sanie 1981, 165, no. 30, Pl. 43/9a-b.

³² Topoleanu, Croitoru 2015, 145, no. 40.

and Tomis³⁷. Some of them also bear the bunch of grape-like mark on the base, like the specimen from Aegyssus. The limited space of circulation (confined to the Istro-Pontic area) and the uniformity of the specimens indicate that they are, very likely, the product of a provincial workshop. The contexts of these findings would date the activity of this producer between the 2nd century and the beginning of the 3rd century AD. Moreover, the large number of such lamps discovered at Tomis is an important aspect and the fact that there was a notable production centre of lamps³⁸ allows us to suggest a possible origin of these lamps at Tomis.

Alongside the vegetal motifs found on this type of lamps, another popular iconographic representation from the area found on the lamps discovered at Aegyssus is the motif of the rooster, partially preserved on one of our fragments (cat. no. 11). In the absence of a producer mark, the decoration plays an important role in the identification of a possible workshop, as in the case mentioned above. Thus, the rooster is one of the most used motifs from the iconographical repertoire of Euctemon³⁹, the most prolific local producer from Dobruja. His products circulated between the 2nd century and the beginning of the 4th century AD⁴⁰. His main workshop was located at Tomis, but other possible branches may have been functioning in the area, mainly on the western shore of the Black Sea⁴¹. Although Euctemon's mark is very well attested throughout the region, this lamp is the first of this kind published from the excavations conducted at Aegyssus.

A zoomorphic character is also found on cat. no. 12. It is depicted in a running pose, but due to the fragmentary state of the discus we cannot certainly identify the animal. The decoration is very poorly impressed, and production imperfections can be observed, suggesting a possible regional/local origin. The last specimen of this type (cat. no. 13) is a shoulder fragment, also made in an inferior quality manner.

³³ Nicolae 1994, 199-203, no. 3, Pl. IV/3A-B.

³⁴ Rusu-Bolindeț 2011, 404, no. 2, Pl. VI/ 11; Suceveanu 1982, 108, no. 98, Pl. 10/98.

³⁵ Baumann 2009, 238-239, no. 65, Fig. 8.

³⁶ Topoleanu 2021, 155, no. 9, Pl. VII.

³⁷ Georgescu 2016, 229-235, nos. 590-605, Pl. 79-81; Iconomu 1967, 108-109, nos. 540-549, Fig. 130.

³⁸ For the production of lamps at *Tomis* see Georgescu 2016, I, 187-191; Iconomu 2013, 89-104.

³⁹ Rusu-Bolindeț 2011, 403-404.

⁴⁰ Iconomu 2013, 89-104; Rusu-Bolindeț 2011, 406.

⁴¹ For the circulation of Euctemon's lamps in the region and the location of possible branches see Rusu-Bolindeț 2011, 407-409.



Fig. 4

7. Complete lamp; inv. no. 680 (Fig. 4/7).
Dimensions: L = 8.9 cm; D = 6.5 cm; H = 2.6 (4.4) cm; Dd = 4.1 cm; Db = 3.9 cm; Dfh = 0.5 cm; Dwh = 1 cm.
Description: Circular reservoir. Concave discus, marked by a groove and decorated by a four-petal rosette, with the filling hole placed in the centre of the motif. Narrow inclined shoulder. Annular handle. Short heart-shaped nozzle, partially affected. Flat ring-base, bounded by a circular band, with a *planta pedis* mark. Fine fabric, with rare mica and limestone inclusions, of red (2.5YR 5/8) colour. Evenly applied, good quality slip, of red (10R4/8) colour.
Context: Aegyssus 1990.
Dating: 2nd – 3rd centuries AD.
Origin: Provincial/regional product.
Bibliography: Paraschiv 2012, 251, cat. no. 384.
Analogies: Georgescu 2016, 29 II. nos. 75-76, Pl. 15; Кузманов, Минчев 2018, 83, кат. но. 318, Табл. XXII.
8. Complete lamp; inv. no. 49605 (Fig. 4/8).
Dimensions: L = 9.4 cm; D = 6.8 cm; H = 3.25 (4.36) cm; Dfh = 0.7 cm; Dwh = 1.2 cm.
Description: Round body. Slightly concave discus, a small production imperfection can be seen next to the filling hole. Narrow inclined shoulder. Annular handle, leaning towards the right side. Short round nozzle, with production imperfections around it. Slightly convex ring-base. Fine fabric, with rare limestone and mica particles, of reddish yellow (5YR 6/6) colour. Evenly applied slip, partially affected, of reddish brown (5YR 4/4) colour.
Context: Aegyssus 2011, Radu Negru street no. 37, -1.20 m, SIII.
Dating: 2nd – 3rd centuries AD.
Origin: Provincial (?).
Bibliography: Unpublished.
Analogies: Bauman 2009, 238, no. 64, Fig. 8/64; Chera-Mărgineanu, Lungu 1984, 117, Ll. 2/15.
9. Fragmentary, the handle is missing; inv. no. 679 (Fig. 5/9).
Dimensions: L = 7.3 cm; D = 6 cm; H = 2.5 cm; Dd = 3.9 cm; Db = 3.6 cm.
Description: Round body. Concave discus, bounded by 2 circular grooves, decorated with a sixteen-petal rosette motif, the filling hole being placed centrally. Narrow shoulder. Short heart-shaped nozzle, decorated on its upper part by two spirals. Flat ring based. Fine fabric, with rare mica and limestone inclusions, of reddish brown (2.5YR 3/4) colour.
Context: *Passim*.
Dating: 2nd – 3rd centuries AD.
Origin: Provincial workshop (?).
Bibliography: Paraschiv 2012, 251, cat. no. 383.
Analogies: Georgescu 2016, 223, no. 576, Pl. 78; Iconomu 1967, 106, no. 529, Fig. 128.
10. Fragmentary, part of the discus is missing; inv. no. 1727 (Fig. 5/10).
Dimensions: L = 8.4 cm; D = 6 cm; H = 2.4 cm (4.2) cm; Dd = 4.5 cm; Db = 2.9 cm; Dfh = 1.1 cm.

Description: Slightly concave discus, marked by a circular incision and decorated by a 16-petal rosette with oval impressions at the endings; a big part of the discus is missing. Narrow shoulder, decorated by a poorly impressed motif resembling leaves. Annular handle. Short rounded nozzle, flanked by two spiral motifs. Flat ring base, with multiple points impressed, resembling a grape cluster. Semi-fine fabric, with mica and limestone inclusions, of reddish yellow (5YR 6/8) (reddish yellow) colour. The slip is of red (2.5YR 5/8) colour, partially preserved. Secondary burning marks are found on the lamp.

Context: Aegyssus 2003, *passim*.

Dating: 2nd – 3rd centuries AD.

Origin: Provincial (Tomis?).

Bibliography: Unpublished.

Analogies: Baumann 2009, 238-239, no. 65, Fig. 8; Georgescu 2016, 229-235, no. 590-605, Pl. 79-81; Iconomu 1967, 108-109, no. 540-549, Fig. 130; Nicolae 1994, 199-203, no. 3, Pl. IV/3A-B; Rusu-Bolindeț 2011, 404, no. 2, Pl. VI/ 11; Sanie 1981, 165, no. 30, Pl. 43/9a-b; Suceveanu 1982, 108, no. 98, Pl. 10/98; Topoleanu 2021, 155, no. cat. 9, Pl. VII; Topoleanu, Croitoru 2015, 145, no. 40.

11. Fragmentary, part of the discus is missing; inv. no. 678 (Fig. 5/11).

Dimensions: L = 7.5 cm; D = 5.7 cm; H = 2.5 (4.3) cm; Dd = 3.6 cm; Db = 3.4 cm.

Description: Slightly concave discus, separated by the shoulder through 2 incised grooves, partially affected; on its lower part, the decoration is still visible, resembling the legs and the tail of a rooster. Narrow shoulder. Annular handle. Short round nozzle. Flat ring base. Fine fabric, with limestone particles, of yellowish red (5YR 5/6) (yellowish red) colour.

Context: Aegyssus 2005, *passim*.

Dating: 2nd – 3rd centuries AD.

Origin: Provincial (Tomis?).

Bibliography: Unpublished.

Analogies: Bârlădeanu-Zavatin 1977, 128, M1/5, Pl. V/7; Croitoru 2017, 22, Fig. II/2; Iconomu, Bordeianu 1981, 270, no. 2, Fig. 2/a-b; Paraschiv 1997, 329, no. 33, Pl. IV/33; Rusu-Bolindeț 2011, 403-404, Pl. IV-V; Topoleanu 2012, 114, no. 54, 116, no. 56, Pl. VIII/54-56.

12. Partially preserved, part of the discus is missing; inv. no. 1753 (Fig. 5/12).

Dimensions: L = 7.9 cm; D = 6.1 cm; H = 2.6 cm (4.6) cm; Dd = 4.3 cm; Db = 2.8 cm; Dfh = 1 cm.

Description: Concave discus, a big part of it is missing, with a poorly impressed iconographical motif partially preserved, resembling an animal running (a dog?). Narrow shoulder, decorated by leaves, also poorly impressed. Annular handle, placed slightly sideways. Short and round nozzle. Flat ring base. Fine fabric, with limestone and mica inclusions, of light red (2.5YR 6/6) colour. Secondary burning traces on its surface.

Context: Aegyssus 2004, *passim*.

Dating: 2nd – 3rd centuries AD.

Origin: Provincial (?).

Bibliography: Unpublished.

Analogies: For the morphology and the shoulder decoration: Topoleanu, Croitoru 2015, 136, no. 136-138.

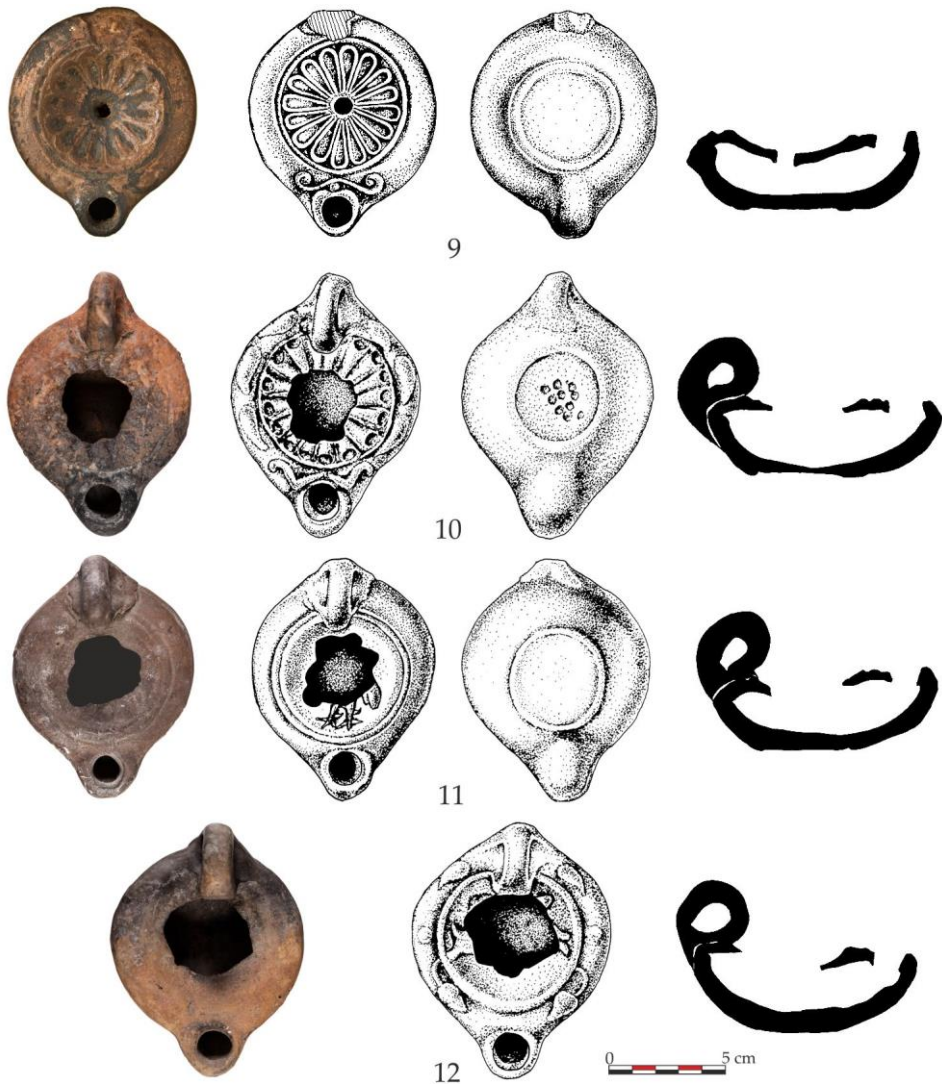


Fig. 5

13. Fragmentary specimen, parts of the shoulder, discus, base and of the nozzle are preserved; inv. no 2108 (Fig. 6/13).

Dimensions: Lp = 7.1 cm; Dp = 2.6 cm; Hp = 3.4 cm.

Description: Concave discus, surrounded by a bridged groove, in a poor state of preservation; a small part of the decoration can be observed; however, the motif is indistinguishable. Inclined shoulder, decorated with a pair of globules in the middle and

another one next to the nozzle. Soot traces visible on the remaining part of the nozzle. Flat ring base. Fine fabric, of light red (2.5YR 6/8) colour. Partially preserved slip, of reddish yellow (7.5YR 6/6) colour.

Context: Aegyssus 1977.

Dating: 2nd – 3rd centuries AD.

Origin: Provincial (?).

Bibliography: Unpublished.

Analogies: Loeschcke Type VIII.

VII. Iconomu 1967 Type XXI lamps

One fragment (cat. no. 14) belongs to a type of lamps with an elongated reservoir and a leaf-shaped handle, dated between the 2nd and 3rd centuries AD⁴². It is made of a fine fabric, of red colour, with limestone and mica inclusions, and covered in a similar colour slip, partially affected. Some small clay lumps and cracks in the clay suggest that it may be a regional product, although its origin is uncertain.

14. Fragmentary, the handle is preserved (Fig. 6/14).

Dimensions: Lp= 4.85 cm; Dp= 4.05 cm.

Description: Slightly concave discus, with a bridge edge. Triangular handle, resembling a leaf, with a central row of impressed dots. Fine fabric, with limestone and mica inclusions, of 2.5YR5/8 (red) colour. Slightly affected slip, of red (7.5R 4/8) (red) colour.

Context: Aegyssus 2018, S3, Area B, □1B, -1,50 m.

Dating: 2nd – 3rd centuries AD.

Origin: Provincial workshop (?).

Bibliography: Unpublished.

Analogies: Iconomu 1967, 121, cat. no. 635, Fig. 37; Iconomu 1986, Pl. IV/5.

VIII. Ivány Type XIX lamps

The last specimen of the Early Roman period in our catalogue (cat. no. 15) is a fragment of a circular, multi-nozzled lamp, tubular in section. This particular specimen was meant to be used while hanging, as one of the suspension lugs is preserved. The lugs were made manually and then attached to the lamp. Only one of the nozzles remained intact, as well. The fragment is roughly made, with several visible imperfections, thus it was likely produced in a regional or local centre. The dating of this specimen in the Early period was determined by similar analogies from Dacia⁴³ and Pannonia⁴⁴.

⁴² Iconomu 1967, 20, Type XXI, fig. 37.

⁴³ Alicu, Nemeș 1977, 32, Type XI, nos. 314-315.

⁴⁴ Iványi 1935, 19, Pl. IV/6.



Fig. 6

15. Fragmentary multi-nozzle lamp, one of the nozzles is preserved (Fig. 6/15).

Dimensions: Lp = 7.3 cm; D = 10.4 cm; Hp = 3.1 cm; Dwh = 1.4 cm.

Description: Hollow, circular tubular reservoir. An impressed band running across the fragment. Only one nozzle is preserved, slightly affected. A suspension lump is also preserved, having a handle-like shape. Traces of secondary burning on the surface. Semi-fine fabric, with limestone and mica particles, of reddish brown (2.5YR 5/3) colour. Uneven firing and an overall rough finishing.

Context: Aegyssus, *Passim*.

Dating: 1st – 3rd centuries AD.

Origin: Regional workshop (?).

Bibliography: Unpublished.

Analogies: Alicu, Nemeș, 1977, 32, Type XI, cat. nos. 314-315; Ivány 1935, 228, Type XIX, Pl. LV/7.

C. Late Roman Period (4th – 7th centuries AD)

The transition from the Early Roman period to the Late Roman one (from the 4th century until the 7th century AD) is marked by several administrative, political, social, cultural and economic changes for the region of Dobruja, now part of the newly formed *Scythia* province⁴⁵. As expected, these changes had a great impact on the lamp-making industry, mainly regarding typology, the quality of production, trading routes and especially in terms of iconography. As the persecution of Christianity ended during the reign of Constantine I, and became the official religion of the Empire under Theodosius I, the Christian motifs became increasingly more popular, being amongst the most used themes in the iconography of lamps from Late Antiquity. However, the previous symbols used in the Graeco-Roman world, such as images of gods and mythological figures still persisted in the repertoire of lamps, although their presence gradually faded away.

IX. Broneer Type XXVII lamps

Also dated from this period, four specimens from our catalogue (cat. nos. 16-19) belong to a type of lamps characterized by a circular and rather large reservoir, with a trapezoidal nozzle and with two lines in relief on both sides of the shoulder, dividing it in four sections. O. Broneer includes these lamps in his typology under the Type XXVII⁴⁶. They were initially produced in Corinth starting from the beginning of the 2nd century AD, and later copied by producers from Athens. The latter added their own particular elements, resulting in the development of an Athenian variant of this type that have circulated between the 3rd and the 4th centuries AD⁴⁷, mainly in the Eastern regions of the Empire. In turn, they inspired lamp makers throughout Greece, the Eastern Mediterranean and the Pontic basins to replicate this type, either by imitating the original pieces, or through the trading of moulds⁴⁸. The discovery of a waste pit with numerous fragments of this type with different defects of production at Tomis

⁴⁵ For a more detailed overview of different aspects regarding the Late Roman period in the Scythia province see Suceveanu, Barnea 1991, 154-293 and Zahariade 2006.

⁴⁶ Broneer 1930, Type XVII, 90-102.

⁴⁷ For a more detailed overview of the Athenian production of these lamps see Perlzweig 1961, 17-64.

⁴⁸ Karivieri 2008, 155-160.

indicates the activity of at least a workshop in which copies after Athenian lamps of this type were made⁴⁹.

In the case of two specimens (cat. nos. 16-17) the mark is still visible on the bases. On cat. no. 16, the production mark is an elaborate one, composed of a rosette-like incised symbol with six petals, and with radially disposed letters between the petals; the visible letters are Π, Λ, Α, Τ and Ν, thus the name of the producer can be identified as Πλάτωνος. The particularities of this lamp (the fabric colour, the absence of slip, the annular handle, numerous limestone inclusions and the poorly impressed decoration), as well as the name of the lamp-maker imply the provenance of this piece from a Cypriot workshop⁵⁰, likely producing imitations after original Athenian lamps. Similar such lamps, with the upper half identical with ours but different production marks, were found in various sites spanning the former territories of the Roman Empire⁵¹, evidence for the trading of lamp moulds between different workshops throughout the ancient world. In the province of Moesia Inferior, the mark of Πλάτωνος is attested at Odessos, the modern Varna⁵².

The second marked lamp (cat. no. 17) has an anepigraphic stamp, in the form of five impressed circles. This particular mark is also found in the region on a lamp from Tomis⁵³. It was discovered in a funerary context, dated in the first half of the 4th century AD through a coin minted during the reign of Constantine I⁵⁴. The iconography of the lamp is partially affected, the complete motif being an erotic scene depicting a young man and a donkey, as it can be observed from other examples listed in the analogy entry in the catalogue. Lamps adorned with this particular motif were, initially, the product of the Athenian lamp-maker Πίρρειος, whose workshop was located in the Kerameikos quarter, starting from the first half of the 3rd century AD until short after the Herulian invasion⁵⁵. The workshop of Πίρρειος was specialized in *symplegma* scenes, having a great influence on the erotic iconography of the Attic

⁴⁹ Iconomu 1970, 237-242, nos. 1-6, Figs. 2-13.

⁵⁰ For a more detailed overview of Cypriot lamps of this type see Katsioti 2017, 34-41 and Oziol 1977, 219-236.

⁵¹ Bailey 1988, 314-315, Q2568, Pl. 70, with the mark ΕΙΡΗΝΑΙΟΥ; Chrzanovski, Zhuravlev 1998, no. 63, with the mark ΦΟΙΜΗΚΟΥ; Katsioti 2017, 62, no. Cy 53; Oziol 1977, 225, no. 653; Perlzweig 1961, 153, no. 1818, Pl. 31; Waldhauer 1914, 62, no. 483, Pl. XLV, with the mark ΑΡΧΕΠΟΛΙΔΟΣ).

⁵² Чичикова 1961, 312, no. 6, Fig. 1.

⁵³ Iconomu 1967, 124, no. 646, Fig. 43.

⁵⁴ Costea, Costea 2008, 297-304.

⁵⁵ Menzel 1969, 81-82, no. 539, Abb. 47/3; Perlzweig 1961, 47-48.

pottery⁵⁶, his representations were also copied by the later generations of lamp-makers, particularly by Εὐτυχής⁵⁷ ἢ Λεοντεύς⁵⁸.

The mark of Εὐτυχής has a varied typological repertoire, including the combination of his name with different symbols, including the five circles found on the specimen from Aegyssus⁵⁹. Therefore, the dating of the archaeological context in which the lamp was discovered, alongside the type of production mark allow us, with some reservations, to identify this piece as a product of Εὐτυχής, even though his name does not appear in combination with the circles. Moreover, lamps which can be certainly attributed to his workshop have circulated in the Pontic basin, with discoveries from Chersonesos⁶⁰, Odessos⁶¹ and Tomis⁶².

The third lamp of this type (cat. no. 19) is a handle fragment that was discovered during the excavations conducted in *Area C* sector. The last fragment of this type is decorated with a lion on the discus and a herringbone motif on the shoulder. Lamps with the same decoration were found at Tomis, one of them bearing the mark ΠΙΕΙΜΟΥ⁶³.

16. Complete lamp; inv. no. 53653 (Fig. 6/16).

Dimensions: L = 9.8 cm; D = 7.5 cm; H = 2.9 (3.9) cm; Dd = 6 cm; Dfh = 0.6 cm; Dwh = 1 cm.

Description: Circular reservoir. Large concave discus, confined by two incised lines, decorated with a twenty-four-petal rosette; centrally placed filling hole. Narrow shoulder, with two bars in the middle of each side, dividing it in 4 sections, decorated with a circular herringbone motif, poorly impressed. Lamellar pierced handle. Short trapezoidal nozzle, with usage traces. Convex base, confined by two incised circles, with a production mark resembling a rosette with six petals, alongside the letters composing the producer's name incised between the petals, ΠΛΑΤ(Ω)Ν. Semi-fine fabric, with dense limestone inclusions, of very pale brown (10R 8/4) colour. Without slip.

Context: Aegyssus 2016, S1, □E41, - 2,30/ - 2,40 m.

Dating: 3rd – 4th centuries AD.

Origin: Import (Cyprus).

Bibliography: Unpublished.

⁵⁶ Kübler 1952, 106-109.

⁵⁷ Perlzweig 1961, 34-37.

⁵⁸ Perlzweig 1961, 43.

⁵⁹ Perlzweig 1961, 35.

⁶⁰ Waldhauer 1914, 62, no. 477, Pl. XLV.

⁶¹ Кузманов 1992, 30, no. 184 (the specimen has a similar mark with the one from Aegyssus, with four circles displayed in the shape of a cross and with the letters EY in the middle); Кузманов, Минчев 2018, 87, no. 333, Табл. XXIV; Тончева 1964, 55-56, обр. 17.

⁶² Georgescu 2016, 306, no. 780, Pl. 105.

⁶³ Iconomu 1967, 125, no. 647, Fig. 44.

Analogies: For the morphology and decoration: Bailey 1988, 314-315, Q2568, Pl. 70 (with ΕΙΡΗΝΑΙΟΥ mark); Chrzanowski, Zhuravlev 1998, no. 63 (with ΦΟΙΜΗΚΟΥ mark); Katsioti 2017, 62, no. Cy 53; Oziol 1977, 225, no. 653; Perlzweig 1961, 153, no. 1818, Pl. 31; Waldhauer 1914, 62, no. 483, Pl. XLV (with ΑΡΧΕΠΟΛΙΔΟΣ mark). For the mark: Cesnola 1882, 285, no. 8; Чичикова 1961, 312, no. 6, Fig. 1; Hellmann 1985, 41-42, no. 40; Waldhauer 1914, 60-61, no. 464, Pl. XLIV.

17. Fragmentary lamp, part of the discus and the upper part of the handle are missing; inv. no. 47939 (Fig. 7/16).

Dimensions: L = 10.5 cm; D = 8.2 cm; H = 3.1 (3.5) cm; Db = 4.5 cm; Dwh = 1.3 cm.

Description: Round reservoir. Concave discus, encircled by a bridged band, partially affected. The decoration on the discus is partially preserved, depicting a young man holding an animal tail, alongside a vegetal motif (possibly a tree?); it represents an erotic *symplegma* scene between a man and a donkey. Narrow flat shoulder, with two lateral bars dividing it in four sections with one horizontal S-like incision on each side, decorated with a row of dot rosettes and stalks. Lamellar handle, with two incised grooves going down, towards the base. Short trapezoidal nozzle, with usage traces near the wick hole and one small hole between it and the discus, possibly to facilitate oxygen circulation. Slightly convex ring-base, confined by two impressed grooves, with a producer mark resembling five impressed circles, disposed in a cross. Fine fabric, with rare mica inclusions, of light brown (7.5YR 6/4) colour.

Context: Aegyssus 2007, on 14 Noiembrie street, discovered in an inhumation grave.

Dating: First half of the 4th century AD.

Origin: Import (Athens).

Bibliography: Costea, Costea 2008, 299, Fig. 4).

Analogies: Gill, Hedgecock 1992, 415, no. 17, Fig. 17, Koutsouflakis, 2008, 144, RL88, Fig. 6.5; Menzel 1969, 81-82, no. 539, Abb. 47/3; Perlzweig 1961, 122-123, no. 827-830; Poulou-Papadimitriou 1986, 600, no. 39, Fig. 35; Sapouna 1998, 111, no. 164, Taf. 14.

18. Fragmentary lamp, the handle is preserved (Fig. 7/18).

Dimensions: Dp = 4.9 cm; Hp = 4.7 cm.

Description: Lamellar handle, partially pierced, with two parallel incised lines, merging towards the base. In the lower part, a motif resembling a herringbone can be seen on the handle.

Context: Aegyssus 2017, Area C, S1, C1, -2.30 m.

Dating: 4th century AD.

Origin: Import (Aegean workshop?).

Bibliography: Unpublished.

Analogies: see cat. no. 18 for handle analogies.

19. Fragmentary, a part of the discus and of the shoulder are preserved; inv. no. 53656 (Fig. 7/19).

Dimensions: Lp = 6.4 cm; Dp = 4.7 cm.

Description: Slightly concave discus, marked by a bridged circular groove, with a poorly impressed lion motif partially preserved. Narrow shoulder, decorated with a herringbone

motif. Fine clay, with rare mica and limestone particles, of reddish yellow (7.5YR 6/6) colour. Without slip.

Context: Aegyssus 2015, S1, □E42, - 1,60 m.

Dating: 3rd – 4th centuries AD.

Origin: Import (Cyprus?).

Bibliography: Unpublished.

Analogies: Broneer 1930, 259, no. 1217, Pl. XVIII/1217; Iconomu 1967, 23, Fig. 43/44; Iconomu 1986, Pl. IV/9; Perlzweig 1961, 130, Pl. 21/97.

X. "Sunburst" Type lamps

One shoulder fragment (cat. no. 20) belongs to a type of lamps also dated in this transitional period, known in the scientific literature as *Sunburst* lamps, or *Rubchatye* (in Russian)⁶⁴. This term is derived from the decoration on the shoulder of these lamps, a radial row of lines resembling sun rays. The motif was also interpreted as a laurel or palm branch, as well as a stylized representation of the lamp's light⁶⁵. In Scythia province, similar such lamps were found at Argamum⁶⁶, Callatis⁶⁷, Histria⁶⁸, Noviodunum⁶⁹ and Tomis⁷⁰. A notable aspect in this regard is the presence of a Zeest 72 type amphora fragment, discovered during older excavations in the fortress⁷¹, also of northern Pontic origin and dated between the 3rd and the 4th century AD, as in the case of the lamp fragment. Thus, both the amphora and lamp fragments serve as relevant evidence for the circulation of goods produced in the northern Pontic region at Aegyssus and into the area in this chronological frame.

20. Fragmentary, part of the discus and of the shoulder are preserved (Fig. 7/20).

Dimensions: Lp = 4.6 cm; Dp = 3.3 cm.

Description: Concave discus, confined by an impressed groove, greatly affected. Slightly inclined shoulder, with a row of lines in relief. Secondary burning marks on the surface of the fragment. Fine fabric, of light red (2.5YR 6/8) colour, with limestone and mica particles.

Context: Aegyssus 2018, S3, Area B, □3A-B, -1.10 m.

Dating: 4th century AD.

⁶⁴ Chrzanovski, Zhuravlev 1998, 133-135.

⁶⁵ Chrzanovski, Zhuravlev 1998, 133-135.

⁶⁶ Two unpublished specimens are in the collection of the History and Archaeology Museum of Tulcea.

⁶⁷ Sauciu-Săveanu 1924, 164, Fig. 100; Harțușe, Bounegru 1982, 229, Pl. V/4; Topoleanu, Croitoru 2015, 149-152, no. 42; Preda 1980, M9, 85, Pl. LI/9.2

⁶⁸ Bocan, Dabîca 2023, 74-75, nos. 25-27.

⁶⁹ Baumann 2009, 254, no. 122, Fig. 14/122 a-b.

⁷⁰ Iconomu 1967, 67, no. 216, Fig. 98; Panaitescu 1977, 342, no. 2, M II, Fig. 6/2; Iconomu 1986, 76-77, Pl. 6/1; Băjenaru, Dobrinescu 2008, 195, M 13, no. 1, Pl. 9/1.

⁷¹ Stănescu 2018, 212, no. 5, Fig. 4/4.

Origin: Import; North Pontic workshop (?).

Bibliography: Unpublished.

Analogies: Băjenaru, Dobrinescu 2008, 195, M 13/1, Pl. 9; Ionomu 1986, Pl. VI/1; Kostova, Dobрева 2008, 163-154, N7 (Pl.119/7/7a); Кузманов 1992, 38, кат. но. 277; Topoleanu 2012, 166, no. 100, Pl. XII/100.

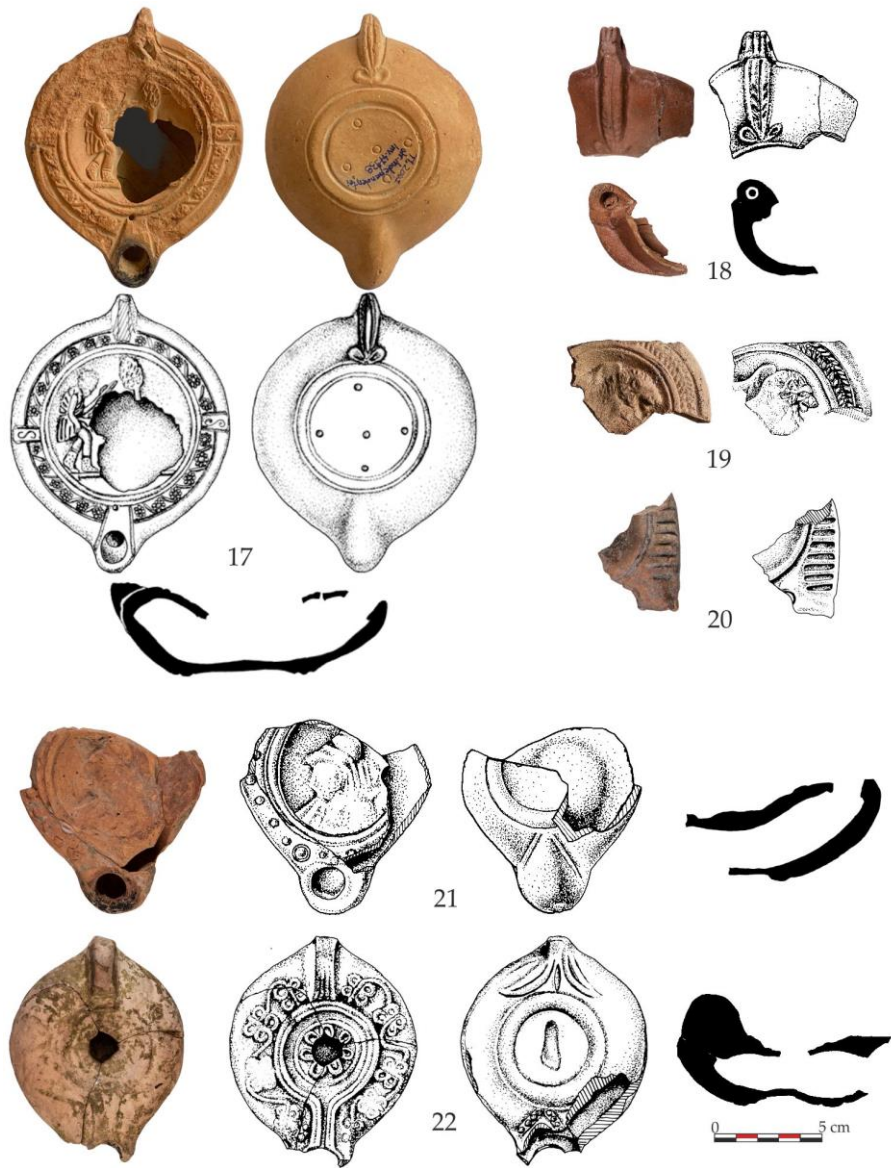


Fig. 7

XI. Broneer Type XXVIII lamps

One lamp from our catalogue (cat. no. 21) belongs to Broneer Type XXVIII, a type derived from the previously discussed Type XXVII that includes different variants of lamps from Late Antiquity⁷². It bears the bust of *Athena Promachos*, wearing a Corinthian helmet and holding a spear. One close analogy with our lamp is a specimen from the collection of the British Museum, found during excavations at Ephesus⁷³. Based on the similarities with that lamp, and on the particularities of the fabric, the fragment from Aegyssus can be perceived, with some reservations, as a Micro-Asian import of a lower quality. It also has the distinctive incised lines on the base, specific to the products of Asia Minor, and referred to by D.M. Bailey as "Ephesian underbodies"⁷⁴; although the base is not completely preserved, it likely belongs to Eph. A type. This representation of goddess Athena is already attested in the region on several lamps discovered at Tomis⁷⁵, one of them being also inscribed with the mark of a local producer, ΜΑΡΚΟΣ⁷⁶.

21. Fragmentary, a part of the reservoir is missing; inv. no. 53654 (Fig. 7/21).

Dimensions: Lp = 6 cm; Dp = 6.3 cm; Dwh = 1 cm.

Description: Slightly concave discus, encircled by a bridged groove, decorated with the bust of *Athena Promachos*, alongside a partially preserved spear. Narrow shoulder, with a radial row of globules in relief. Short rounded nozzle, with soot traces next to the wick hole. Flat ring base, with a bridged edge and a pair of incised diagonal lines starting from the base and going towards the nozzle. Fine clay, with limestone and mica inclusions, of light red (2.5YR 6/8) colour. Unevenly applied slip, poorly preserved, of red (7.5R 5/8) colour.

Context: Aegyssus, *Passim*.

Dating: 4th century AD.

Origin: Import (Asia Minor?).

Bibliography: Unpublished.

Analogies: Bailey 1988, 381, Q3098, Pl. 104, Fig. 93; For the decoration: Iconomu 1967, 70, nos. 235-237, Fig. 32-33; Topoleanu 2012, 161, no. 95, Pl. XII.

XII. Broneer Type XXIX lamps (Groups 3/4)

Another representative type of Micro-Asian lamps is Broneer XXIX. O. Broneer divides this type into four groups. Six specimens in our catalogue belong to Group 3 (cat. nos. 22-27). On an almost complete specimen (cat. no. 22), the discus is decorated

⁷² Broneer 1930, 102-114, Type XXVIII.

⁷³ Bailey 1988, 381, Q3098, Pl. 104, Fig. 93.

⁷⁴ Bailey 1988, 371, Fig. 162.

⁷⁵ Iconomu 1967, 70, nos. 235-237.

⁷⁶ Iconomu 1967, 70, no. 235; the mark is written as ΜΑΡΚΟΥ/ΤΟΜΕΙΤΗΣ/ΕΠΟΙΕ[Ι].

with a rosette and the shoulder with a vegetal motif (grapevine?), both very poorly impressed. The base has a *planta pedis* mark, and it also bears the specific “fishtail”, of Eph. B type. Due to the overall low quality, we consider that this particular lamp is likely a copy of an original Micro-Asian model, perhaps made regionally.

Three specimens (cat. nos. 23-25) bear the characteristic row of globules on the shoulder, commonly found on lamps of Broneer Type XXIX, Group 3. The first one is complete, only a small part of the discus being damaged. It has two loops, and the nozzle channel is flanked by two loops. The base has the Eph. Type B fishtail motif. The fabric is fine, micaceous, and the slip, partially affected, is of good quality, brownish colour, thus this particular specimen can be identified as an import from *Asia Minor*. The other two fragments are in a poor state of preservation. However, the remaining parts allow us to associate them with this type; the former is made out of a fine, light brown fabric, micaceous, and it is covered by a red slip, and the latter has a reddish fabric, also micaceous, and covered in a brown slip; both of these fragments are also, most likely, Micro-Asian imports. A shoulder fragment with similar characteristics as the previous ones is decorated with a grapevine motif (cat. no. 26).

In the case of another fragment (cat. no. 27), only the lower part of the shoulder and the nozzle are preserved, the former being decorated by a radial row of diagonal lines and points, and the channel towards the nozzle is flanked by two stylized representations of grapes (?). The specimen is made out of a fine fabric, with mica inclusions, and it is uncoated, likely being a Micro-Asian import.

As for the Group 4 of this type, there are five specimens which belong to this category (cat. nos. 28-32). An almost complete lamp (cat. no. 28) is decorated with an erotic scene of two anthropomorphic figures on the discus, heavily damaged. The base is of Eph. A type, with a *planta pedis* production mark, surrounded by three impressed points. Its fabric is also fine and micaceous, and it is covered by a brownish slip, partially affected.

An almost complete lamp of this type (cat. no. 29) has the shoulder decorated with a vegetal motif resembling a stylised grapevine and vertical loops on the nozzle. The fabric is fine and micaceous, with a good quality red slip, partially preserved, likely being a Micro-Asian import as well. The next fragment (cat. no. 30), of which approximately half of the reservoir is preserved, has the discus decorated with a rosette, and on the shoulder there is a loop motif, radially displayed, resembling petals. The fabric is fine, with mica particles, and uncoated.

The remaining two fragments of Group 4 (cat. nos. 31-32) are in a poor state of preservation, one of them being decorated with a rosette on the discus and with a vegetal motif on the shoulder, and the other one bears a zoomorphic figure running

(possibly a deer?). Both of them are uncoated. All four specimens of Broneer Type XXIX/ Group 4 are likely Micro-Asian imports.

22. Almost complete lamp, the wick hole and part of the base are missing (Fig. 7/22).

Dimensions: Lp = 8.2 cm; Dp = 6.5 cm; H = 2.3 (3.6) cm; Dfh = 1 cm; Dwh = 1 cm.

Description: Round reservoir, elongated towards the nozzle. Concave, small discus, confined by a series of bridged grooves, decorated with a rosette, very poorly impressed. The rim is broad, inclined and decorated with a vegetal motif resembling leaves, also poorly impressed. Lamellar handle, unpierced, with incised lines on the upper part, and a "fish-tail" motif on the lower part, next to the base. The nozzle is elongated, with a bridged channel between the discus and the wick hole, which is only partially preserved; two oblique lines with a row of circles on the lower valve, under the nozzle. Convex ring-base, confined by a broad band and marked with a *planta pedis* motif impressed in the centre. Fine fabric, with mica inclusions, of reddish yellow (5YR 5/6) colour. The lamp was made using worn out mould, as the decoration is barely visible.

Context: Aegyssus 2018, S3, Area B, □3B, -1.10 m.

Dating: 4th – 5th centuries AD.

Origin: Regional (?).

Bibliography: Unpublished.

Analogies: Katsioti 2017, 421, cat. no. Kn 34; Milner 1937, Taf. VIII/1516.

23. Almost complete lamp, part of the discus is broken; no. inv. 53651 (Fig. 8/23).

Dimensions: L = 9.5 cm; D = 6.8 cm; H = 2.8 (4.2) cm; Dd = 3.1 cm; Db = 2.8 cm.

Description: Slightly oval shape, elongated towards the nozzle. Concave discus, partially affected, confined by a bridged groove that forms a channel towards the wick hole. Inclined, curved rim, with four rows of globules on each side. Lamellar, unpierced handle, with three vertical incisions and a fishtail motif on the lower part. Convex base, confined by a bridged band, with a production defect visible. Elongated nozzle, with a round wick hole. A pair of two lines incised under the nozzle. Fine fabric, with limestone and mica particles, of reddish yellow (7.5YR 7/6) colour. Unevenly applied slip, partially affected, of reddish yellow (5YR 6/8) colour.

Context: Aegyssus 2016, S1, □ D43, -1,80 m.

Dating: 5th – 7th centuries AD.

Origin: Import (Asia Minor).

Bibliography: Unpublished.

Analogies: Bauman 2009, 258, no. cat. 135, Fig. 18/135; Bădescu, Bottez 2014, 229, no. 4, Pl. 4/4; Bivolaru, Bottez 2016, 137, Fig. 4/4; Covacef, Corbu 1991, 293-295, Fig. 1/13; Curta 2016, 68-71, nos. 1-132, Fig. 22-28; Harțușche, Bounegru 1982, 230, Pl. VII/1; Hayes 1992, 84, no. 12, Pl. 18/12; Iconomu 1967, tip XXVII, Fig. 50; Ivány, 1935, Pl. XXXVIII/6; Kostova, Dobrova 2008, 167, no. 17, Pl. 121/17; Scorpan 1979, 160, no. 17, Pl. IV/17; Streinu, Pîrvulescu 2020, 181-182, nos. 4-5, Pl. I/ 4-5; Topoleanu 2000, 210-211, nos. 543-547, 550-555 Pl. LXVIII, 543-546, Pl. LXIX 547-550-555; Vitelli 1982, 193, L12, Fig. 9-3/L12.

24. Fragmentary, the handle and part of the rim are preserved; inv. no. 2054 (Fig. 8/24).
Dimensions: Lp = 3.2 cm; Dp = 4.2 cm; Hp = 2.2 cm.
Description: Inclined, curved rim, decorated with four rows of globules. Lamellar handle, with incised lines. Fine fabric, with mica particles, of light brown (7.5YR 6/4) colour. Evenly applied slip, of red (2.5YR 4/8) colour.
Context: Aegyssus, *passim*.
Dating: 5th – 7th centuries AD.
Origin: Import (Asia Minor).
Bibliography: Unpublished.
Analogies: Same as cat. no. 23.
25. Fragmentary, part of the rim and the handle are preserved (Fig. 8/25).
Dimensions: Lp = 3.4 cm; Dp = 4.6 cm; Hp = 3.6 cm; Dd = 3.1 cm; Db = 2.8 cm.
Description: Inclined, curved rim, decorated with two rows of globules, poorly impressed. Lamellar, unpierced, handle partially affected. Fine fabric, with rare limestone and mica inclusions, of light red (2.5YR 6/8) colour. Partially affected slip, of red (2.5YR 4/6) colour.
Context: Aegyssus 2018, S3, Area B, □3B, -1.10 m.
Dating: 5th – 7th centuries AD.
Origin: Import (Asia Minor).
Bibliography: Unpublished.
Analogies: Same as cat. no. 23.
26. Fragmentary, the rim is preserved (Fig. 8/26).
Dimensions: Lp = 3.2 cm; Dp = 3.1 cm.
Description: Narrow rim, decorated with grapevine motif, separated by the discus through a bridged groove. Fine fabric, with mica particles, of light red (2.5YR 6/8) colour. Partially affected slip, of red (2.5YR 4/6) colour.
Context: Aegyssus 2018, S3, Area B, □1A, -1.10/-1.20 m.
Dating: 4th – 5th centuries AD.
Origin: Import (Asia Minor).
Bibliography: Unpublished.
Analogies: Bailey 1988, 383, Q 3115, Pl. 105; Miltner 1937, 162-164, nos. 1551-1630, Taf. VIII-IX; Perlzweig 1961, 160, no. 2046, Pl. 33; Topoleanu 2000, 201, no. 518, Pl. LXIV.
27. Fragmentary, the nozzle and part of the reservoir are preserved (Fig. 8/27).
Dimensions: Lp = 5.1 cm; Dp = 6.6 cm; Dwh = 1.5 cm.
Description: Elongated reservoir. Inclined rim, decorated with a band of radially disposed lines and a row of points at the end of each line; two groups of points resembling two grape bundles can be seen on each side of the nozzle. Bridged groove between the discus and the wick hole, forming a channel. Elongated nozzle, with usage traces around the wick hole. A pair of incised oblique lines is still visible on the lower part. Fine fabric, of red (10R 5/8) colour, with rare mica and limestone particles. Poorly preserved slip, of dark red (10R 3/6) colour.
Context: Aegyssus 1978, NC4, Niv. 7.

Dating: 5th – 7th centuries AD.

Origin: Import (Asia Minor?).

Bibliography: Unpublished.

Analogies: Miltner 1937, 165, no. 1657, Taf. IX.

28. Fragmentary, part of the discus and the wick hole are missing; inv. no. 28702 (Fig. 8/28).

Dimensions: Lp = 7.5 cm; Dp = 6.2 cm; H = 2.9 (4) cm; Db = 3.5 cm.

Description: Slightly elongated reservoir. Concave discus, partially affected, confined by a bridged groove and decorated with two anthropomorphic figures, depicted in a *symplegma* scene. Inclined and curved rim, decorated with a radial row of circles. Lamellar handle, with three incisions. Flat ring-base, with a bridged edge, marked with a *planta pedis* and three impressed points. A pair of two oblique incised lines can be seen on the lower part, under the nozzle. Secondary burning marks on the surface of the lamp. Fine fabric, of reddish yellow (5YR 7/6) colour, with rare mica and limestone inclusions. Unevenly applied slip, partially preserved, of red (2.5YR 5/8) colour.

Context: Aegyssus 1981, *passim*.

Dating: 5th – 6th centuries AD.

Origin: Asia Minor (Ephesus?)

Bibliography: Unpublished.

Analogies: For the type and shoulder decoration: Bailey 1988, 384, Q 3122, Pl. 107; Katsioti 2017, 270, cat. no. AM 129.

29. Partially preserved specimen, part of the nozzle is missing; inv. no. 25185 (Fig. 9/29).

Dimensions: Lp = 8.3 cm; D = 6.8 cm; H = 2.8 (4.3) cm; Dd = 3.3 cm; Db = 3.1 cm.

Description: Round reservoir. Concave discus, confined by a bridged groove, with the filling hole in the upper field. Inclined shoulder, decorated by a grapevine motif. Lamellar handle, unpierced, slightly affected in the upper part. Short nozzle, partially preserved, with soot traces alongside the wick hole; part of a decoration can be observed, resembling short loops in relief. Small round base, with a bridged circular edge. Secondary burning marks on the body. Fine fabric with mica and limestone inclusions, of reddish yellow (5YR 7/6) colour. The slip is partially affected, and is of red (10R 4/8) colour.

Context: Aegyssus 1980, *passim*.

Dating: 4th – 5th centuries AD.

Origin: Asia Minor (Ephesus?)

Bibliography: Unpublished.

Analogies: Кузманов, Минчев 2018, 116, кат. но.516, Табл. XVI; Miltner 1937, 113, no. 149, Taf. II.

30. Partially preserved, half of the reservoir is missing; no. inv. 53655 (Fig. 9/30).

Dimensions: Lp = 8.6 cm; Dp = 4.7 cm; Hp = 2.9 (4.5) cm; Dfh = 1 cm.

Description: Oval reservoir, elongated towards the nozzle. Slightly concave discus, separated by the rim through a bridged groove. Curved, inclined rim, decorated with a band of petal-like loops, in relief. Lamellar handle, unpierced. Slightly convex base with a bridged circular band. A pair of two oblique lines are partially preserved on the lower part

of the lamp, under the nozzle. Fine fabric, with limestone and mica inclusions, of reddish yellow (5YR 6/8) colour. Slip partially affected, of reddish yellow (5YR 7/8) colour.

Context: Aegyssus 2016, C. 1, □ M13, SV, -1.50 m.

Dating: 5th – 6th centuries AD.

Origin: Import (*Asia Minor?*).

Bibliography: Unpublished.

Analogies: Miltner 1937, 136, no. 771, Taf. V.

31. Fragmentary, the handle and parts of the reservoir are preserved (Fig. 9/31).

Dimensions: Lp = 3.7 cm; Dp = 3.6 cm; Hp = 3.8 cm.

Description: Concave discus, partially preserved; decorated with a rosette, of which three petals can be observed. Narrow rim, decorated with a leaf motif. Lamellar and pierced handle. Fine fabric, with rare limestone and mica particles, of light red (2.5YR 7/6) colour.

Context: Aegyssus 2018, Area B, □ 1A, -1.40 m.

Dating: 5th – 6th centuries AD.

Origin: Import (*Asia Minor?*).

Bibliography: Unpublished.

Analogies: Broneer 1930 Type XXIX, Group 4.

32. Fragmentary, parts of the rim and of the discus are preserved (Fig. 9/32).

Dimensions: Lp = 4.3 cm; Dp = 3 cm.

Description: Concave discus, confined by a bridged groove. Slightly curved rim, inclined, decorated with a zoomorphic figure running (deer?). Fine fabric, with mica and limestone particles, of reddish yellow (5YR 6/6) colour.

Context: Aegyssus, *Passim*.

Dating: 5th century AD.

Origin: Import (*Asia Minor?*)

Bibliography: Unpublished.

Analogies: Broneer 1930, Type XXIX, Group 4.

XIII. Hayes 1972 Type II lamps

Furthermore, another category of lamps that enjoyed great popularity in Late Antiquity are those of Hayes II type, of North African origin. Initially, they were produced in workshops from Northern and Central Tunisia, and have circulated between the 5th century and the 7th century AD⁷⁷. In our assemblage from *Aegyssus*, five specimens (cat. nos. 33-37) belong to this type.

Due to the visible low quality of execution and the poorly impressed details on nos. 33-34, we assume that these two are likely imitations of original North African specimens. Both of them have soot traces around the nozzle, indicating that they were used. In the case of the former, a small part of the decoration can be seen, resembling a

⁷⁷ Bailey 1988, 182-183, Curta 2016, 57.

flared end of a cross, and the latter is decorated with grapevines and tendrils. The third specimen of Hayes Type II from our catalogue is a discus and shoulder fragment (cat. no. 33); the fabric and the slip colour, as well as the overall good quality execution, suggests a North African origin. The discus bears the partially preserved image of a ram and the shoulder is decorated by a band of different geometric shapes, displayed in a zigzag pattern.



Fig. 8

The iconographic repertoire of the North African lamps of Hayes Type II is remarkably varied⁷⁸, with several Christian-themed symbols often present, as the ones presented above (the cross, grapevine and the ram). Some of them such as Biblical scenes and figures, crosses and monograms have a purely Christian background while others, such as the grapevine, were already present as motifs on lamps in the classical Graeco-Roman art, but were given a new Christian symbolism. The other two fragments of this type (cat. nos. 36-37) also seem to be imitations, although of a clearly better quality than the nos. 34-35. The shoulder fragment of no. 36 is adorned by two rows of in relief circles, and the no. 37 is decorated by a band of diverse motifs confined in circles, including a *Chi-rho* monogram.

Multiple specimens of Hayes Type II both of North African origin and/or copies were found throughout the Balkan peninsula, predominantly in the western and southern parts, thus indicating that the authentic goods were imported by sea, and shortly afterwards were reproduced and distributed into the region⁷⁹.

33. Fragmentary, part of the discus and of the rim are preserved; inv. no. 42654 (Fig. 9/33).

Dimensions: Lp = 4.9 cm; Dp = 4.7 cm; Dfh = 0.9 cm.

Description: Elongated reservoir. Flat sunken discus, decorated by a zoomorphic motif, resembling probably a ram (the head is missing). Flat shoulder, with bridged edges, and decorated with a band of geometric motifs, displayed in a zig-zag pattern. Fine fabric, with mica particle, of red (10R 4/6) colour. Good quality slip, evenly applied, of very dusky red (10R 2.5/2) colour.

Context: Aegyssus, *Passim*.

Dating: 5th – 6th centuries AD.

Origin: Import (Northern Africa).

Bibliography: Unpublished.

Analogies: For the shoulder decoration: Bussière, Rivel 2015, Types Ka 5 (for the arrows), Cg 3 and Ch 2 (for the triangles); for the morphology: Hayes 1972, 311, Type II.

34. Fragmentary, the nozzle and part of the reservoir are preserved; inv. no. 28554 (Fig. 9/34).

Dimensions: Lp = 6.4 cm; Dp = 5.8 cm; Dwh = 1.9 cm.

Description: Elongated reservoir. Narrow flat shoulder, some parts of the decoration can be observed, but due to the poor state of preservation, it is indistinguishable (vegetal inspiration?). Bridged nozzle channel; towards the discus, a small part of the decoration is preserved, possibly from a cross with flared ends. Partially affected wick hole, with soot traces around it. Semi-fine fabric, with limestone and mica particles, of red (2.5YR 5/8) colour.

Context: Aegyssus 1981, S1, □6, N6/N7.

Dating: 5th – 6th centuries AD.

⁷⁸ For the various motifs found on these lamps see Bailey 1988, 184-185 and Ennabli 1976, 39.

⁷⁹ Curta 2016, 59.

Origin: Regional workshop (?).

Bibliography: Unpublished.

Analogies: For the general shape and for the possible discus decoration: Bailey 1988, 194-196, Q 1753- Q 1783, Pl. 19-22 and Ennabli 1976, 177-224, nos. 858-1154, Pl. XLVII-LXI.

35. Fragmentary, part of the upper half is preserved; inv. no. 25193 (Fig. 9/35).

Dimensions: Lp = 8.4 cm; Dp = 4.2 cm.

Description: Elongated reservoir. Flat, slightly sunken discus, with poorly impressed motifs resembling grape bundles and vines. Narrow, flat shoulder, confined by bridged edge, decorated by a band of spiral-like motif, also resembling vines. Soot traces around the wick hole and on the nozzle channel. Semi-fine fabric, with limestone and mica inclusions, of light red (2.5YR 6/8) colour.

Context: Aegyssus 1970, N3a +24,66

Dating: 5th – 6th centuries AD.

Origin: Import (?).

Bibliography: Unpublished.

Analogies: Grumăzescu 2023, 134, cat. no. 2, Fig. 3/2, Кузманов, Минчев 2018, кат. но. 548, Табл XXXVIII.

36. Fragmentary, the handle and part of the shoulder are preserved; inv. no. 2053 (Fig. 9/36).

Dimensions: Lp = 4.7 cm; Dp = 3.2 cm.

Description: Flat shoulder, decorated with two rows of circles on each side. Lamellar handle, unpierced. A small part of the discus decoration can be observed, resembling lines in a zigzag pattern. Fine fabric, with rare mica particles, of reddish yellow (5YR 6/6) colour. Unevenly applied slip, partially affected, of red (10YR 5/8) colour.

Context: Aegyssus 1974, N26, Gr. 4-v.

Dating: 5th – 6th centuries AD.

Origin: Import (?).

Bibliography: Unpublished.

Analogies: For the shoulder decoration: Bubić 2011, 256-257, no. 26, Pl. 3.

37. Fragmentary, a part of the shoulder is preserved (Fig. 9/37).

Dimensions: Lp = 4.5 cm; Dp = 1.8 cm; Hp = 3 cm.

Description: Flat rim, slightly sunken, decorated with a band of circles in relief with different motifs inside, including a *Chi-Rho* monogram. Fine fabric, with rare mica inclusions, of light red (2.5YR 6/8) colour.

Context: Aegyssus 2020, Rondă street no. 5, S3-4, □5, filling.

Dating: 5th – 6th centuries AD.

Origin: Import (?).

Bibliography: Unpublished.

Analogies: For the shoulder decoration: Ennabli 1976, 49, no. 59, Pl. II.

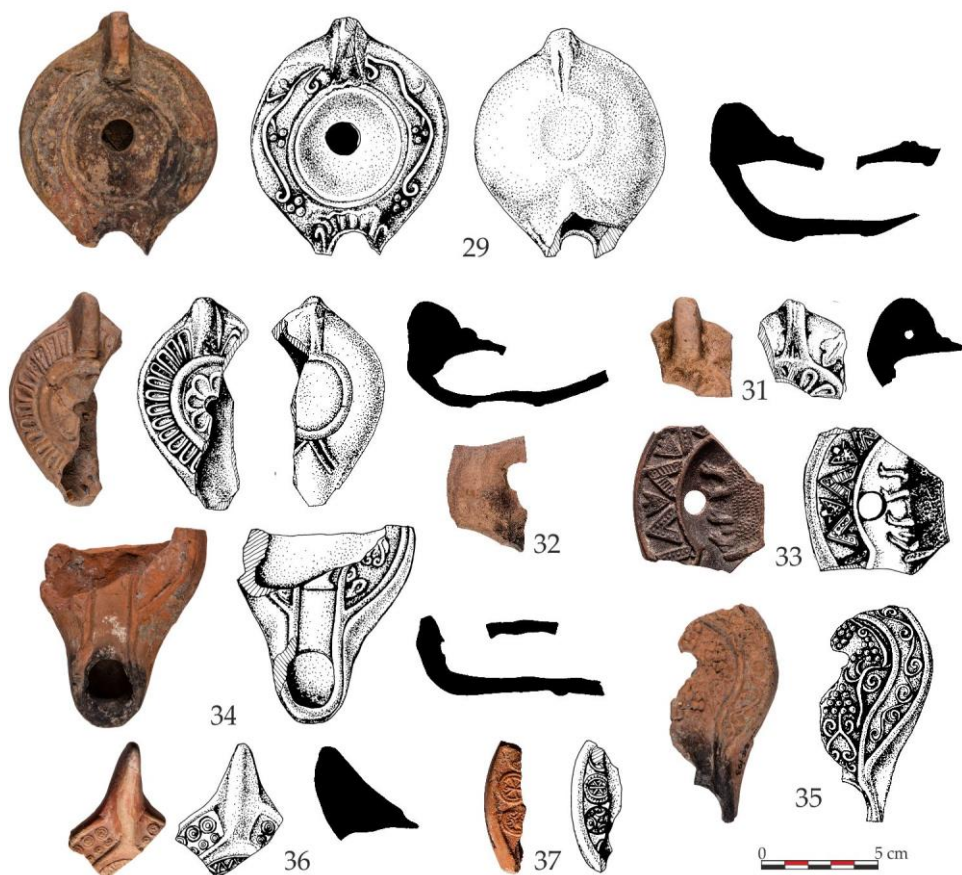


Fig. 9

XIV. Iconomu 1967 Type XXX lamps

Subsequently, the popularity of Hayes II lamps has influenced not only the reproduction of this type, but also the production of completely different types inspired by the original North African ones, as in the case of nos. 38-47 from our catalogue. These lamps belong to Iconomu 1967 Type XXX, a type characterized by an elongated body, mould-made vertical and lamellar handle, with either sloped or flat shoulder often decorated by various motifs⁸⁰.

Moulds of this type were discovered in the province of Scythia, three at Tomis⁸¹ and one at Sacidava⁸². The ones from Tomis were found hidden in the walls of Room 4

⁸⁰ Curta 2016, 75-81; Iconomu 1967, 27-28, 139-145, nos. 723-755, Figs. 53-56.

⁸¹ Iconomu 1976, 136-137, Figs. 3-5.

of the Mosaic Edifice, which determined the author to see it as an attempt of protecting these moulds from the attacks of 601-602 and to use them once the situation will be safer⁸³. However, there is no evidence for the activity of a workshop at the place of discovery, and the presence of several Kuzmanov Type IV amphorae in the same room suggest a commercial aspect of the space⁸⁴. Thus, the lamp moulds and the amphorae found in the room could be part of a transport, brought by a ship and stored there either for local usage or to be distributed somewhere else⁸⁵.

Two of these moulds from Tomis and the one from Sacidava bear a cross on them, as in the case of our cat. nos. 40 and 42. From an iconographical perspective, one specimen of this type stands out (cat. no. 44), being adorned with a stylized image of a bird, likely an eagle. It also has a fern motif on the lower part, between the handle and base, and a row of circles on the sloped shoulder. The decorations are poorly impressed, the overall unkempt aspect and the lack of similar analogies suggest that it may be a local or regional product.

In contrast with the previous one, close analogies with our cat. no. 45 were discovered at Histria⁸⁶ and Ulmetum⁸⁷. Regarding the former, the authors consider it more likely to be the product of a regional workshop due to its poor quality of execution, an aspect that can be observed both on the specimen from Ulmetum and on our fragment from Aegyssus. Moreover, similarities in fabric further indicates a common origin, perhaps in a provincial or regional centre that produced this model at a rather small scale.

One handle fragment (cat. no. 46) has a similar fabric with the lamps of the same type produced at Marcianopolis⁸⁸. If this specimen was indeed produced in the area of Marcianopolis, it gives us further insights into the regional trading of lamps. The other two handle fragments of this type (cat. nos. 47-48) are also likely to be regional products, especially in the case of the latter, which is of a distinctively low quality.

The numerous findings of the Iconomu 1967 Type XXX from modern day Romania and Bulgaria⁸⁹, the moulds previously mentioned from Tomis and Sacidava, as well as another mould discovered at Stara Zagora⁹⁰ indicate that this type and

⁸² Scorpan 1979, 161-162, no. 20, Pl. VI/20, XVI/20.

⁸³ Iconomu 1976, 140-144.

⁸⁴ Curta 2016, 79; Iconomu 1976, 144.

⁸⁵ Curta 2016, 79.

⁸⁶ Iliescu, Bottez 2021, 208-209, Fig. 12/6.

⁸⁷ Pârvan 1913, Pl. XXXI, Fig. 1, no. 9.

⁸⁸ Кузманов, Минчев 2018, 251.

⁸⁹ Curta 2016, 75-81.

⁹⁰ Илиев 2010, 249, 251, Fig. 1.

different variants of it were produced mainly in centres throughout the North-Eastern part of the Balkan peninsula. Additionally, the discoveries from Room 4 of the Mosaic Edifice can be regarded as important evidence for the circulation of lamp moulds and, if the room indeed functioned as a storage place for the further distribution of goods, it could also shed some light on the regional trading routes.

38. Complete lamp; inv. no. 28553 (Fig. 10/38).

Dimensions: L=9.1 cm; D=5.7 cm; H=2.5 (4.1) cm; Dfh=1.2 cm; Dwh=1.6 cm.

Description: Elongated, slightly oval reservoir. Flat, elongated discus, with filling hole in the upper field, partially affected. Flat, sunken shoulder, with a radial row of circles, poorly impressed, and a radial row of lines on the outer edge. Lamellar handle, unpierced, with three bridged lines between its lower part and the base. Elongated nozzle, ending in a relatively large wick hole with usage traces around it. Flat ring-base, confined by a bridged margin. Semi-fine fabric, with limestone and mica particles, of red (2.5YR 5/6) colour.

Context: Aegyssus, Surorilor street, no. 13.

Dating: 6th – 7th centuries AD.

Origin: Provincial/regional workshop.

Bibliography: Paraschiv 2012, 252, cat. no. 386.

Analogies: Iconomu 1967 Type XXX; Iconomu 1986, 172, Type XLIX, variant II, Pl. IX/7.

39. Almost complete lamp, part of the nozzle is missing; inv. no. 53652 (Fig. 10/39).

Dimensions: Lp = 9.7 cm; D = 6.7 cm; H = 2.4 (3.7) cm; Db = 4.5 cm.

Description: Elongated, oval reservoir. Flat discus, confined by two bridged grooves forming a channel towards the nozzle; slightly affected filling hole. Flat shoulder, with a bridged outer edge, decorated with a band consisting of different motifs, of vegetal (grapevine?), geometric and zoomorphic (a pair of stylized animals?) inspiration. Lamellar, unpierced handle, slightly curved to the right. Elongated nozzle, partially affected, with a poorly impressed cross on the channel; some soot traces can be observed. Flat base, marked by a bridged circular groove. Fine fabric, with limestone inclusions, of very pale brown (10 YR 8/4) colour. Poorly preserved slip, of red (10R 5/8) colour.

Context: Aegyssus 2017, □ 1, -1.20 m.

Dating: 6th – 7th centuries AD.

Origin: Regional workshop (Odessos/Marcianopolis?).

Bibliography: Unpublished.

Analogies: Кузманов, Минчев 2018, кат. no. 554, Табл. XXXVIII; Topoleanu 2000, 203, no. 525, Pl. XLV.

40. Complete lamp; inv. no. 834 (Fig. 10/40).

Dimensions: L = 10 cm; D = 6.2 cm; H = 3 (4.4) cm; Dfh = 1.3 cm; Dwh = 1.5 cm.

Description: Slightly ovoidal reservoir. Flat discus, confined by a bridged outer edge, forming a channel towards the wick hole; decorated with two tendrils like motif above the filling hole, two lateral rows of globules and one cross with flared endings on the channel. Narrow, inclined shoulder, with a radial row of lines and one circle on each side of the nozzle. Lamellar, unpierced handle, with a bridged line connecting it to the base. Elongated

nozzle, with a relatively large wick hole with strong soot traces from usage. Slightly convex base, with a bridge circular edge and four pairs of relief grooves, two under the handle and two under the nozzle. Fine fabric, with mica and limestone inclusions, of light red (2.5YR 6/6) colour. Slip of red (10R 4/8) colour.

Context: Aegyssus, *Passim*.

Dating: 6th – 7th centuries AD.

Origin: Regional (?).

Bibliography: Paraschiv 2012, 252, cat. no. 385.

Analogies: Georgescu, Marinoiu 2017, 411, no. cat. 7, Fig. 7; Iconomu 1967, 141-142, nos. 734 and 737-742; Popescu 1994, 366, Fig. 75; Topoleanu 2012, 205-206, no. 123, Pl. XV.

41. Complete lamp; inv. no. 54886 (Fig. 10/41).

Dimensions: L = 9 cm; D = 5.6 cm; H = 2.8 (3.9) cm; Dd = 2.8 cm; Db = 3.2 cm; Dfh = 1.1 cm; Dwh = 1.6 cm.

Description: Elongated reservoir, slightly ovoidal. Sunken discus, filling hole placed centrally and slightly affected, with radial rays around it, confined by a bridged groove, forming a channel towards the nozzle. Narrow, inclined shoulder, with a row of lines in relief. Elongated nozzle, decorated by a cross in relief on the channel, above the wick hole. Slightly convex ring base, with a circular edge in relief and two oblique lines under the nozzle. Heavy burning marks on the nozzle and shoulder. Semi-fine fabric, with mica and limestone particles, of red (2.5YR 5/8) colour.

Context: Aegyssus, *Passim*.

Dating: 6th – 7th centuries AD.

Origin: Provincial/regional workshop.

Bibliography: Unpublished.

Analogies: Iconomu 1967, 140, no. 727, Fig. 54; Topoleanu 2012, 204, no. 122, Pl. XV.

42. Complete lamp; inv. no. 833 (Fig. 10/42).

Dimensions: L = 10.2 cm; D = 6.5 cm; H = 3.4 (5.3) cm; Dfh = 1.5 cm; Dwh = 1.5 cm.

Description: Elongated reservoir. Slightly concave discus, with a central filling hole, confined by a circular bridged groove, another one going towards the filling hole, forming an open channel. Inclined shoulder, decorated with a radial row of lines, poorly impressed and partially broken. Lamellar handle, slightly affected. Flat ring, with a bridge circular edge. Semi-fine fabric, of yellowish red (5YR 5/6) colour, with limestone and mica inclusions.

Context: Aegyssus, *Passim*.

Dating: 6th – 7th centuries AD.

Origin: Provincial/regional workshop.

Bibliography: Paraschiv 2012, 253, cat. no. 387.

Analogies: Кузманов, Минчев 2018, 139-140. кат. но. 685-689, Тbl. XLVI-XLVII; Opreș, Rațiu 2017, 107, no. 96, Pl. 17; Topoleanu 2000, 184, no. 465, Pl. LVII.

43. Almost complete lamp; part of the upper half is missing; inv. no. 42728 (Fig. 10/43).

Dimensions: L = 9 cm; Dp = 6 cm; H = 2.6 (4.1) cm; Db = 3 cm; Dfh = 0.9 cm; Dwh = 1.5 cm.

Description: Slightly ovoidal reservoir, elongated towards the nozzle. Flat discus, the filling hole is placed centrally and above it four lines can be observed, alongside a radial row of globules in relief. Inclined shoulder, decorated by a band of spiral-like motifs (tendrils?), partially affected. Elongated nozzle, with two pairs of lines in relief above the wick hole, on each side of the shoulder; heavy burning traces around the wick hole and one the channel of the nozzle. Slightly concave base, with a bridged circular edge. Semi-fine fabric, with limestone and mica particles, of reddish yellow (5YR 6/8) colour.

Context: Aegyssus 1988, *Passim*.

Dating: 6th – 7th centuries AD.

Origin: Provincial / regional workshop.

Bibliography: Unpublished.

Analogies: Topoleanu 1984, 190, no. cat. 13, Pl. II/4, IV/6.

44. Almost complete lamp, part of the nozzle is missing; inv. no. 2112 (Fig. 11/44).

Dimensions: Lp = 8 cm; Dp = 5 cm; H = 3 (4.9) cm; Dd = 3.8 cm; Db = 2.3 cm; Dfh = 1 cm.

Description: Elongated reservoir. Sunken, flat discus, confined by a bridged groove forming a channel, decorated with a styled bird motif, resembling an eagle (?), with the head towards the nozzle. Narrow, inclined shoulder, decorated with a row of incised circles. Lamellar large handle, with a vegetal motif on the lower half (a fern?). Flat base, with a circular bridged edge, and one line towards the nozzle. Semi-fine fabric, of very pale brown (10YR 7/4) colour, with limestone and mica inclusions.

Context: Aegyssus 1976, *passim*.

Dating: 5th – 7th centuries AD.

Origin: Provincial/ regional workshop.

Bibliography: Chrzanovski 2013, 116.

Analogies: Iconomu 1967 Type XXX.

45. Fragmentary, parts of the reservoir and of the nozzle are missing; inv. no. 2014 (Fig. 11/45).

Dimensions: Lp = 8.3 cm; Dp = 6.4 cm; Hp = 3.2 (3.6) cm; Db = 3.3 cm.

Description: Ovoidal shape, elongated towards the nozzle. Small flat discus, confined by a series of lines in relief. Broad, inclined shoulder. The handle is heavily affected, only its base is still observable. Flat base, with a bridge edge. Two pairs of incised lines in the form of a “V” on the lower half, one under the nozzle and one under the handle. Fine fabric, with limestone inclusions and mica inclusions, of reddish yellow (5YR 6/8) colour.

Context: Aegyssus 1974, Sα, □2, -1.40 m.

Dating: 6th – 7th centuries AD.

Origin: Provincial/ regional workshop.

Bibliography: Unpublished.

Analogies: Baumann, 2009, 261, no. 142, Fig. 18/142; Iliescu, Bottez 2021, 209, Fig. 12/6; Pârvan 1913, Pl. XXXI, Fig. 1, no. 9.

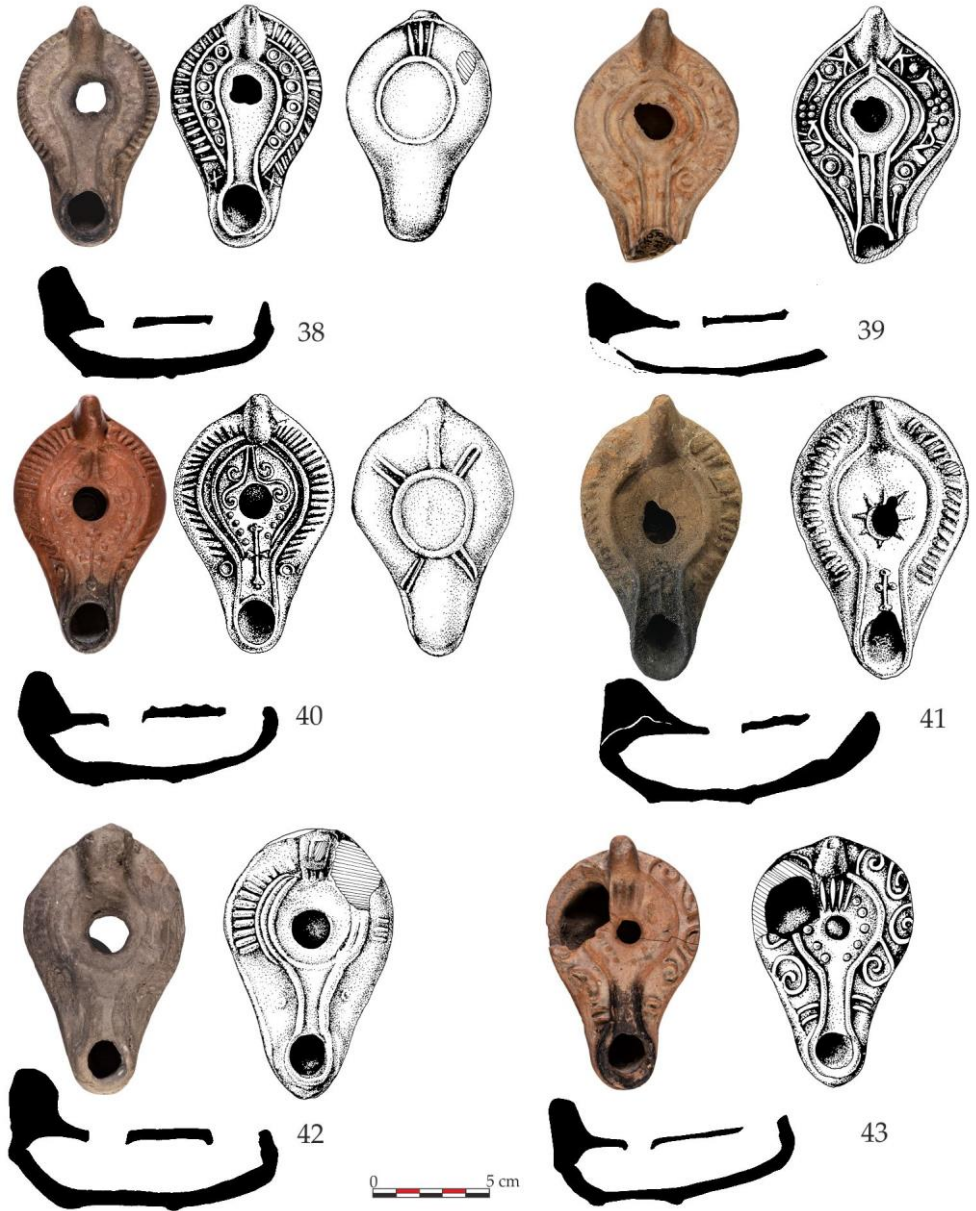


Fig. 10

46. Fragmentary, the handle is preserved; inv. no. 2058 (Fig. 11/46).
Dimensions: Lp = 2.2 cm; Dp = 3.2 cm; Hp = 2.2 cm.
Description: Lamellar, upright handle, slightly affected. Narrow and inclined shoulder, delimited by a bridge groove. Fine fabric, of very pale brown (10YR 8/4) colour, with limestone inclusions. A line in relief can be observed on the remaining discus area, part of the decoration.
Context: Aegyssus 1980, S1, western profile.
Dating: 5th – 6th centuries AD.
Origin: Regional workshop (?).
Bibliography: Unpublished.
Analogies: Iconomu 1967 Type XXX.
47. Fragmentary, part of the shoulder, discus and of the handle are preserved; inv. no. 2059 (Fig. 11/47).
Dimensions: Lp=3.6 cm; Dp=2.5 cm.
Description: Concave discus, with two petals preserved from the decoration. Inclined shoulder, decorated with a row of impressed circles, out of which three can still be observed. Semi-fine fabric, with mica and limestone inclusions, of light red colour (2.5YR 6/8).
Context: Aegyssus, *Passim*.
Dating: 6th – 7th centuries AD.
Origin: Provincial / regional workshop (?).
Bibliography: Unpublished.
Analogies: Iconomu 1967, Type XXX.
48. Fragmentary, the handle and part of the shoulder are preserved; inv. no. 42659 (Fig. 11/48).
Dimensions: Lp = 3.5 cm; Dp = 4.8 cm; Hp = 3.8 cm.
Description: Inclined shoulder, adorned with two spiral-like motifs flanking the handle and a row of radial lines. Lamellar, upright handle, unpierced. Coarse fabric, with limestone, mica and rock inclusions, of yellow (10YR 7/6) colour. Overall poor quality of execution.
Context: Aegyssus 1981, □3, N5, -1.80 m.
Dating: 6th – 7th centuries AD.
Origin: Regional workshop (?).
Bibliography: Unpublished.
Analogies: Iconomu 1967 Type XXX.

XV. Iconomu 1967 Type XXXIII/ Hayes 1992 Type 11 lamps

One partially preserved lamp (cat. no. 49) corresponds with Iconomu 1967 type XXXIII/ Hayes 1992 Type 11. Sometimes referred to as "Danubian" or "Balkan" lamps, they have a recognizable biconical, pear-shaped reservoir, with a broad shoulder often decorated with a radial pattern, slightly concave discus and, perhaps the most representative aspect, a variety of handle types: in the shape of a cross, palmette or

fern leaf, human or ram head⁹¹. Their production started in the 6th century AD in Micro-Asian centres and shortly after, workshops in the Pontic basin and the Balkan peninsula began reproducing and creating variants of this type, circulating until the beginning of the 7th century AD⁹².

A stunning discovery in this regard was made at the Late Roman fortress from Kranevo, in Bulgaria, where a deposit with numerous moulds of this type were found in a tower⁹³. Other moulds were discovered in Bulgaria at Silistra⁹⁴ and Rusalka⁹⁵. In Romania, a mould was found alongside the previously mentioned ones, of Iconomu Type XXX, hidden in the walls of Room 4 from the Mosaic Edifice at *Tomis*⁹⁶. Moreover, two lamps of this type were found in a pottery kiln in Oltina (the ancient Altinum), in Constanța county⁹⁷.

Although this type is perhaps the most popular one out of the Late Roman types found in the province of *Scythia*, with various specimens and variants attested in sites throughout the region⁹⁸, this fragment is the only one of this type from our catalogue. The micaceous fabric and the light greyish slip indicate a Micro-Asian origin⁹⁹.

49. Fragmentary, part of the reservoir and the wick hole are missing; inv. no. 2012 (Fig. 11/49).

Dimensions: Lp = 7.3 cm; Dp = 6.4 cm; Hp = 3.5 cm; Dfh = 1.1 cm.

Description: Pear-shaped reservoir, elongated towards the nozzle. Flat, sunken discus, delimited by a bridged edge, greatly affected. Inclined shoulder, decorated with a row of radial lines. Traces of burning marks can still be observed on the wick hole. Flat base, with an elongated, bridged edge. Fine fabric, with limestone and mica inclusions, of reddish brown (2.5YR 4/4) colour. Partially affected slip, of light gray (7.5YR 7/1) colour.

Context: Aegyssus 1974.

Dating: 6th – 7th centuries AD.

Origin: Import (Asia Minor).

Bibliography: Unpublished.

Analogies: Aricescu 1971, 355, Fig. 4/b; Bivolaru, Bottez 2016, 139, Fig. 4/2; Chrzanovski, Zhuravlev 1998, 173, no. 110; Elefterescu 2017, 118-124, nos. 19-33; Hayes 1992, 87, nos. 74-77, Pl. 22/74-77; Кузманов 1992, 43, кат. но. 319; Grumăzescu 2024, 221-222, nos. 8, 10, Pl. I/8-10; Iconomu 1967, 29, Fig. 58; Iconomu 1986, Pl. IX/12; Popescu 1994, 361, Fig. 64a;

⁹¹ For the handle variants of this type see Curta 2016, 75-98.

⁹² Hayes 1992, 83.

⁹³ Тончева 1953, 81-87; Кузманов, Минчев 2018, кат. но. 957-993, Табл. LXVI-LXIX.

⁹⁴ Кузманов, Бъчваров 1986, 61-62, кат. но. 149, Табл. XX.

⁹⁵ Василчин 1988, 69, Табл. VII/9.

⁹⁶ Iconomu 1976, 136, Figs. 1-2.

⁹⁷ Irimia 1968, 39-400, Figs. 1 and 3.

⁹⁸ Curta 2016, 85-111.

⁹⁹ Iconomu 1986, 100; Topoleanu 2012, 194.

Scorpan 1979, 160, no. 14, 16, Pl. III/14, Pl. IV/16; Severeanu 1936, 85, no. 114, Fig. 105; Streinu, Pîrvulescu 2020, 184, nos. 6-8, Pl. II; Topoleanu 2000, 187, no. 479, Pl. LX; Topoleanu 2012, 197-198, no. 115, Pl. XIV; Topoleanu, Croitoru 2015, 172-173, no. 48; Vitelli 1982, 197, L13, Fig. 9-5/L13.

XVI. Hayes 1992 Type 9/10 lamps

The last specimen from our catalogue is a handle fragment (no. 50) which belongs to either **Hayes 9** or **10** type, as its poor state of preservation does not allow us a certain typological identification. The morphological characteristics of these types are the elongated shape of the reservoir, the band-like handle with a groove on the middle, the raised rim and the sunken discus. The difference between Hayes' types 9 and 10 is the presence, in the case of the latter, of an open channel between the discus and the wick hole. These lamps are also known as "Saraçhane" (or "Constantinople") type, named after the quarter of the former Imperial capital where several such lamps were found¹⁰⁰. They circulated between the second half of the 5th century and the first half of the 7th century AD, mainly in the proximity of Constantinople and the Pontic basin, particularly on the Western shore, where they were also reproduced in local workshops¹⁰¹.

One lamp of Hayes Type 10 was discovered in the kiln from Oltina, together with the other two discussed above¹⁰². Lamps of this type are known throughout the province of Scythia, the majority of them being discovered at Halmyris and Tomis, two lamp-making centres attested through conclusive evidence, where Hayes types 9 and 10 could have been produced and then distributed into the region¹⁰³. However, the fine, micaceous fabric and the partially preserved, good quality slip suggests that this fragment could be an imported product, perhaps from a workshop around the area of Constantinople (?), but a regional origin is not excluded.

50. Fragmentary, the handle is preserved; inv. no. 2056 (Fig. 11/50).

Dimensions: Lp = 3 cm; Dp = 4.5 cm.

Description: Band-like handle, with a median incision, dividing it in two segments. Part of the bridge groove that separates the shoulder from the discus is still preserved. Concave discus, greatly affected. Fine fabric, of light red (2.5YR 6/8) colour, with mica inclusion. Slip partially preserved, of red colour (10R 4/8) colour.

Context: Aegyssus 1976, N26.

Dating: Second half of the 5th century – 7th century AD.

Origin: Import (Constantinople?).

¹⁰⁰ Hayes 1992, 82-83.

¹⁰¹ Topoleanu 2019, 342-343.

¹⁰² Irimia 1968, 400, Fig. 2.

¹⁰³ Topoleanu 2019, 342-344.

Bibliography: Unpublished.

Analogies: Grumăzescu 2023, 138, no. cat. 7, Fig. 3/7; Hayes 1992, 86, no. cat. 53, Pl. 21/53; Iconomu 1986, Pl.10/4. Irimia 1968, 397, Fig. 18/2; Perlzweig 1961, Pl. 45, no. 2857; Topoleanu 2000, 204, no. cat. 532-536, Pl. LXVI/532-536; Topoleanu 2012, 206, no. cat. 124.

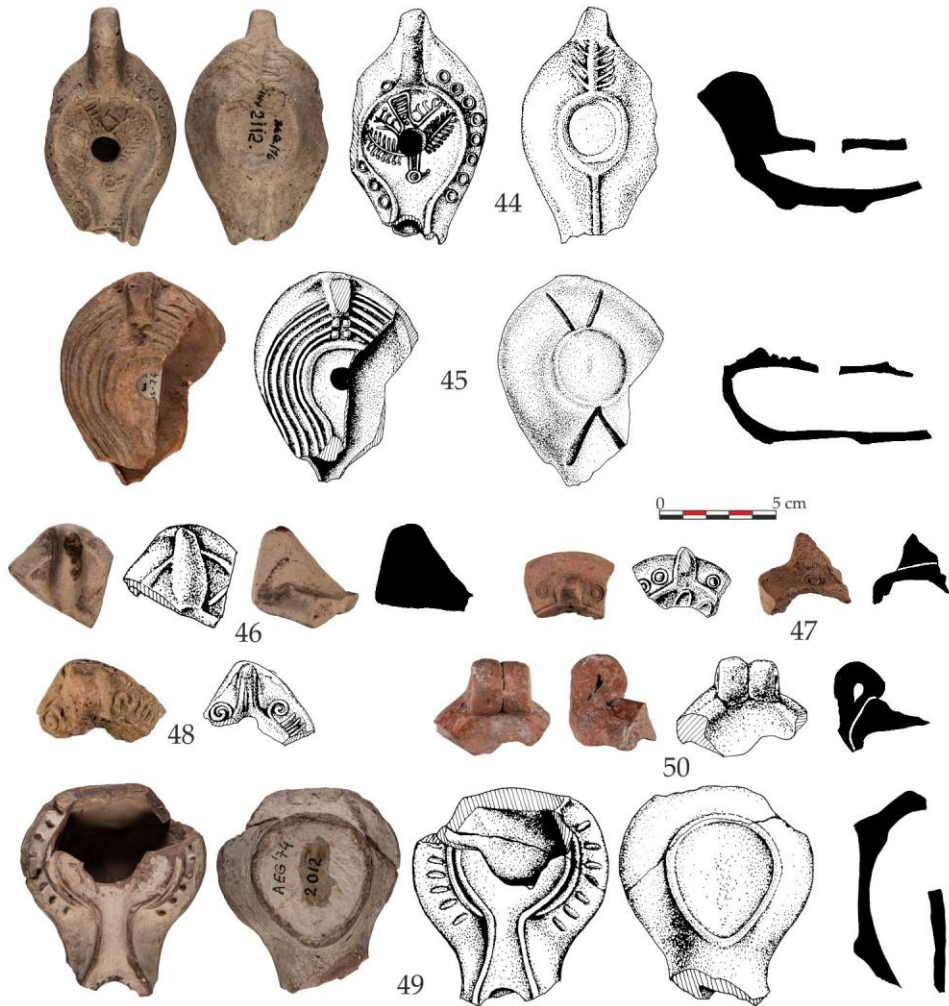


Fig. 11

CONCLUSIONS

The fifty lamps and lamp fragments presented in this paper offer valuable insights regarding the cultural and economic aspects of the ancient habitation of Aegyssus and its surroundings, and they also enrich our current understanding of the chronological phases of the settlement. The corroboration of the data obtained through this paper with other relevant findings from Aegyssus and from other contemporary sites in the area will contribute to the study of the development of both the ancient settlements and societies that inhabited the nowadays Dobruja.

As stated above, the first two specimens from the catalogue, alongside the other grave goods from the Hellenistic necropolis in which they were discovered, attest the various influences on the local communities, mainly coming from the Greek-speaking regions around the Mediterranean Sea (Asia Minor, Campania and Rhodes). Even though cat. no. 2 is a local/regional product, it was inspired by Hellenistic models, thus further demonstrating the close ties between this region and the ancient Greek markets. Another import dating from the late Hellenistic period is cat. no. 3, likely produced in a Micro-Asian centre (possibly at Ephesus), identical with a specimen from Tomis. Based on the shared characteristics, these two lamps could have been produced in the same workshop, afterwards being part of the several imports of goods from Asia Minor into the area.

Lamps of the Early Roman period are relevant discoveries for observing the gradual process of Romanization of the area after the conquest and the particularities of local communities in the following centuries, through the material culture. In this period, both imports and regional products are attested, as several imports of goods from various markets reached the area after the Roman conquest, that also influenced and contributed to the development of regional workshops. One such example can be observed in the case of cat. no. 6, belonging to Loeschcke Type IX but clearly being an imitation after an original specimen. It is likely that this particular piece is the product of one of the earliest lamp producers in the region, as the imported lamps were copied for the local markets, eventually leading to the establishment of provincial workshops, providing the necessary and desired items to local communities during the Roman occupation.

Shortly after, lamps bearing the marks of local producers appeared and circulated throughout the region, two representative examples from our catalogue being nos. 10 and 11. The former, although without an explicit mark, has the characteristic of lamps made in Euctemon's workshops, while the latter being marked with the grape-like motif on the base, both of them commonly found in various sites from Dobruja. In contrast with this regional popularity, the ones presented in this paper are the first specimens of their kind published from Aegyssus, thus being an

important contribution for the study of provincial marks and their distribution, and for further insights into the intra-provincial trading.

As for the production of lamps at Aegyssus, a topic previously raised in a work dedicated to a lot of eleven lamps found during a rescue excavation in the extramural area¹⁰⁴, there is still no concrete evidence in this regard. However, bearing in mind the overall importance of this site and the constant need for supplying of goods to both the local population and the military units stationed here, the hypothetical existence of lamp-making workshops can be taken into consideration.

Regarding the imported specimens, the lamps discovered at Aegyssus were produced in different regions of the former Roman Empire, mainly in the Eastern Mediterranean basin, in Attic, Cypriot and especially in the Micro-Asian workshops, like Ephesus and Knidos. This is to be expected if we consider the close economic ties between Aegyssus and the centres from Asia Minor, a fact that can be observed and studied through numerous and various findings previously published, such as amphoras¹⁰⁵ and tableware¹⁰⁶. The influx of goods of Micro-Asian origin in the area of Aegyssus was conducted at least starting from the Hellenistic period, through either direct or indirect trading with centres from Asia Minor, and continued throughout the centuries, up until the collapse of the Roman authority in the region. Besides the Attic lamp produced in Kerameikos (cat. no. 17), another relevant discovery offers us valuable insights regarding the economic connection between Aegyssus and the Athenian potters' quarter: an anthropomorphic jug, resembling a child's head¹⁰⁷. This lamp and the other marked specimen of Broneer Type XXVII (cat. no. 16) are also relevant in regards to the study of production marks and their circulation, as well as the imitation and the phenomenon of moulds trading. As we have presented in this paper, lamps found in other sites identical in morphology, fabric and decoration with our cat. no. 16, but with various names on the base may constitute evidence for the circulation of moulds between workshops and craftsmen around the ancient world.

Alongside the lamps in this paper, products of North African origin at Aegyssus are also attested through different discoveries such as African Red Slip wares¹⁰⁸ and a Spatheion type amphora¹⁰⁹. The presence of several products originating from such diverse markets at Aegyssus is an expression of the economic advantages provided by its geographic location, that could facilitate the imports from distanced markets, and

¹⁰⁴ Ciur 2024, 205.

¹⁰⁵ Stănescu 2018, 221.

¹⁰⁶ Mocanu, Nuțu 2023, 208-210; Nuțu, Costea 2010, 154.

¹⁰⁷ Nuțu 2021, 257-264.

¹⁰⁸ Nuțu, Costea 2010, 155, Pl. 4/18; Opaiț 1985, 158, Fig. 4/11.

¹⁰⁹ Stănescu 2018, 218-219.

also the circulation of goods at a provincial scale. This aspect, and the fact that this region laid at the crossroads of different cultures are two imported reasons for the variety in typology and iconography present in our lychnological lot.

The repertoire of decorations observed on the lamps from Aegyssus consists of numerous distinctive representations, some of them standing out due to their rarity in the area. For instance, the two erotic scenes presented in this catalogue (nos. 17 and 28) are significant discoveries in respect of the study of *symplegma* representations from the region, as neither of those two depictions have direct analogies in Dobruja, as far as the authors are concerned. Moreover, the erotic scenes in general are notably rare in the area. The fact that they appear on lamps from the Late Roman period (between the first half of the 4th century and the 6th century AD) rather than the Early period (1st – 3rd centuries AD), when these scenes were far more common, makes the two specimens from Aegyssus even more important for the understanding of the evolution and the circulation of *symplegma* motifs on the lamps from Late Antiquity.

The typological repertoire of lamps is also varied, being comprised of sixteen different types, including less commonly found in the area, such as Howland Type 40A, Loeschcke Type IX or Ivány Type XXIX. By contrast, types that are frequent discoveries in other sites from Dobruja, such as Iconomu 1967 Type XXXIII/ Hayes 1992 Type 11 and Hayes Type 9/10 are present at Aegyssus with only one specimen each so far, an intriguing aspect especially considering the fact that both types were produced in provincial workshop, not far from *Aegyssus*.

Acknowledgments

The authors of this paper would like to express their gratitude to our colleagues from ICEM Tulcea, Camelia Geanbai for the drawings of the lamps, and George Nuțu, for the overall help in conducting this research.

BIBLIOGRAPHY

Ovid, *Tristia, Epistulae ex Ponto*, translated by Naum, T., Ex Ponto Publishing House, Constanța, 2019.

Alicu, D., Nemeș, E. 1977, *Roman Lamps from Ulpia Traiana Sarmizegetusa*, British Archaeological Reports, Supplementary Series 18.

Aricescu, A. 1971, *Noi date despre cetatea de la Hârșova*, Pontica 4, 351-370.

Bădescu, A., Bottez, V. 2014, *Lamps Discovered at Histria, in the Acropola Centru-Sud Sector in 2014*, Pontica 47, Supplementum III, 223-238.

Bailey, D.M., 1975, *A Catalogue of the Lamps in the British Museum I, Greek, Hellenistic, and Early Roman Pottery Lamps*, London.

Bailey, D.M., 1988, *A Catalogue of the Lamps in the British Museum. III. Roman Provincial Lamps*, London.

Băjenaru, C., Dobrinescu C. 2008, *Săpături de salvare în necropola romana de la Tomisului*, Pontica 41, 189-208.

Bârlădeanu-Zavatin, E. 1977, *În legătură cu o necropolă din epocă romană timpurie la Callatis*, Pontica 10, 127-152.

Barnea, I. 1950, *O inscripție de la Aegyssus*, Studii și Cercetări de Istorie Veche 1 (2), 175-184.

Baumann, V.H. 2009, *Lucerne de la Noviodunum*, Peuce, serie nouă 7, 217-310 (DOI: <https://doi.org/10.62781/PeuceSN.07.13>).

Bivolaru, A., Bottez, V. 2016, *Roman lamps discovered at Histria, in the Acropolis Centre-South Sector (2013 and 2015)*, Materiale și Cercetări Arheologice, serie nouă 12, 131-140.

Bocan, I., Dabîca, M. 2023, *Lămpile de la Histria I. Lămpi romane timpurii din Sectorul Sud al cetății Histria*, Materiale și Cercetări Arheologie, serie nouă 19, 61-77.

Broneer, O. 1930, *Corinth. Results of Excavations Conducted by the American School of Classical Studies at Athens. IV.II. Terracotta Lamps*, Cambridge.

Bruneau, P. 1965, *Les lampes, Delos XXVI*, Paris.

Bubić, V. 2011, *Late Antique oil-lamps with Early Christian images from the Archaeological Museum in Split*, Vjesnik za Arheologiju i Povijest Dalmatinsku 104, 1, 227-308.

Bucovală, M. 1967, *Necropole elenistice la Tomis*, Editura Muzeul Regional de Arheologie Dobrogea, Constanța.

Bussière, J., Rivel, J. C. 2015, *Répertoire de fleurons sur bandeaux de lampes africaines type Hayes II*, Oxford.

Cesnola, L.P. di 1882, *Salamina. The History, Treasures, and Antiquities of Salamis in the Island of Cyprus*, London.

- Chera-Mărgineanu, C., Lungu, V. 1984, *Noi descoperiri din necropolele tomitane*, Pontica 17, 109-130.
- Chrzanovski, L. 2013, *LVMEN EST OMEN. Arta, istoria si spiritualitatea iluminatului artificial*, Cluj-Napoca.
- Chrzanovski, L. 2020, *Firmalampen: An abundantly-produced lamp-type almost never used? Socio-economic elements to define a new framework to study these peculiar lighting devices*, Peuce, serie nouă 18, 215-262 (DOI: <https://doi.org/10.62781/PeuceSN.18.10>).
- Chrzanovski, L., Zhuravlev, D. 1998, *Lamps from Chersonesos in the State Historical Museum – Moscow*, Roma.
- Ciur, V. 2024, *Roman Lamps from the Extramural Area of Aegyssus*, Peuce, serie nouă 22, 195-211 (DOI: <https://doi.org/10.62781/PeuceSN.22.07>).
- Čičikova, M. 1987, *Pottery lamps from Novae (Lower Moesia)*, Известия на Археологическая Институт 37, 153-172.
- Costea, G., Costea, I. 2008, *A tomb from the 4th century A.D. discovered in Tulcea (Aegyssus)*, Peuce, serie nouă 6, 297-304 (DOI: <https://doi.org/10.62781/PeuceSN.06.14>).
- Covacef, Z., Corbu, E. 1991, *Considerații asupra unei categorii de opaițe descoperite în sectorul V al cetății Capidava*, Pontica 24, 287-297.
- Croitoru, C. 2017, *Sur les lampes de type „Euctemon” découvertes à Barboși, dép. de Galați*, in Nuțu, G., Ailincăi S.-C., Micu, C. (eds.), *Omul, Fluviul și Marea. Studii de Arheologie și Istorie în onoarea lui Florin Topoleanu la a 65-a aniversare*, Cluj-Napoca, 85-98.
- Curta, F. 2016, *Shedding Light on a Murky Matter: Remarks on 6th to Early 7th Century Clay Lamps in the Balkans*, Archaeologica Bulgarica 20 (3), 51-116.
- Elefterescu, D. 2017, *Opaițe romane și romano-bizantine de la Izvoarele (Sucidava), jud. Constanța*, in Nuțu, G., Ailincăi, S.-C., Micu, C. (eds.), *Omul, Fluviul și Marea. Studii de Arheologie și Istorie în onoarea lui Florin Topoleanu la a 65-a aniversare*, Cluj-Napoca, 99-142.
- Ennabli, A. 1976, *Lampes chrétiennes de Tunisie (Musée du Bardo et de Chartage)*, Paris.
- Frečer, R. 2015, *Gerulata: The Lamps. Roman Lamps in a Provincial Context*, Prague.
- Georgescu, V. Ș. 2016, *Obiecte de iluminat descoperite la Tomis secolele I-III p.Chr.*, Vol. I & II, Phd thesis, mss., Timișoara.
- Georgescu, V. Ș., Marinoiu, V. 2017, *Opaițele romane din colecția Muzeului Județean Gorj „Alexandru Ștefulescu” (Târgu Jiu)*, in Forțiu, S. (ed.), *ARHEOVEST, VI. Interdisciplinaritate în Arheologie și Istorie. In Honorem Doina Benea*, Szeged, 401-416.

- Gill, D. W. J., Hedgecock, D. 1992, *Debris from an Athenian Lamp Workshop of the Roman Period*, *The Annual of the British School at Athens* 87, 411-421.
- Grumăzescu, G. 2023, *Opaițe romane din colecția Muzeului de Istorie și Arheologie din Tulcea descoperite la Dinogetia*, *Peuce*, serie nouă 21, 129-149 (DOI: <https://doi.org/10.62781/PeuceSN.21.04>).
- Grumăzescu, G. 2024, *Opaițe romane inedite descoperite în sectorul „Faleză Est” de la Argamum (sec. VI-VII p.Chr.)*, *Peuce*, serie nouă 22, 213-242 (DOI: <https://doi.org/10.62781/PeuceSN.22.08>).
- Gudea, N. 2005, *Der Untermoesische Donaulimes und die Verteidigung der Moesischen Nord- und Westküste des Schwarzen Meeres. Limes et litus Moesiae Inferioris (86-275 N.Chr.)*, *Jahrbuch des Römisch-Germanischen Zentralmuseums Mainz* 52 (2), 317-566.
- Hartușche, N., Bounegru, O. 1982, *Opaițe grecești și romane din colecțiile Muzeului Brăila (Des lampes grecques et romaines du Musée de Brăila)*, *Pontica* 14, 221-233.
- Hayes, J. W. 1972, *Late Roman Pottery*, London.
- Hayes, J. W. 1992, *Excavations at Saraçhane in Istanbul, II, The Pottery*, Princeton.
- Hellmann, M.-C. 1985, *Lampes antiques de la Bibliothèque Nationale, I, Collection Froehner*, Paris.
- Howland, R. H. 1958, *The Athenian Agora. Results of excavations conducted by the American School of Classical Studies. Volume IV. Greek lamps and their survivals*, Princeton, New Jersey.
- Iconomu, C. 1976, *Descoperiri de tipare de opaițe la Tomis*, *Pontica* 9, 135-146.
- Iconomu, C., Bordeianu, C. 1981, *O nouă descoperire de lucerne la Constanța*, *Pontica* 14, 269-267.
- Iconomu, C. 1967, *Opaițe greco-romane*, Constanța.
- Iconomu, C. 1986, *Un capitol al producției și al schimbului de mărfuri în zona Dunării de Jos, Lucernele (sec. I e.n. – VII e.n.)*, Phd. thesis, mss, Bucharest.
- Iconomu, C. 2013, *Euctemon – Un producător de lucerne la Tomis (I)*, *Arheologia Moldovei* 36, 89-104.
- Iliescu, I., Bottez, V. 2021, *Late Roman Lamps Discovered in Istros, on the Acropolis Centre-South Sector (2013-2020 Campaigns)*, *Peuce*, serie nouă 19, 181-224 (DOI: <https://doi.org/10.62781/PeuceSN.19.07>).
- Irimia, M. 1968, *Cuptoarele romano-bizantine de ars ceramică de la Oltina (jud. Constanța)*, *Pontice* 1, 379-408.
- Ivány, D. 1935, *Die Pannonischen Lampen, Eine typologisch-Chronologische Übersicht*, Budapest.
- Karivieri A., 2008, *Athenian lamps in the Black Sea area*, in Roman, C.-A., Gudea, N. (Eds.), *Lychnological Acts 2. Acts of 2nd International Congress on Ancient*

- and Middle Age Lighting Devices (Zalău- Cluj-Napoca, 13th-18th of May 2006), Trade and local production of lamps from the Prehistory until the Middle Age, Cluj-Napoca, 155-160.*
- Katsiotti, A. 2017, *The Lamps of Late Antiquity from Rhodes: 3rd – 7th centuries AD*, Oxford.
- Kostova, K., Dobрева, D. 2008, *Roman, Late Roman and early Byzantine lamps from National Archaeological Reserve "Deultum-Debelt"*, in Roman, C.-A., Gudea, N. (Eds.), *Lychnological Acts 2, Acts of 2nd International Congress on Ancient and Middle Age Lighting Devices (Zalău- Cluj-Napoca, 13th-18th of May 2006). Trade and local production of lamps from the Prehistory until the Middle Age, Cluj-Napoca, 161-169.*
- Koutsouflakis, G. 2008, *Lamps of the Roman Period*, in Sampson, A. (ed.), *The Cave of the Cyclops. Mesolithic and Neolithic Networks in the Northern Aegean, Greece. Vol I. Intra-site Analysis, Local Industries, and Regional Site Distribution*, Philadelphia.
- Kübler, K. 1952, *Zum Formwandel in der spatantiken attischen Tonplastik*, Jahrbuch LXVII, 99-145.
- Loeschke, S. 1919, *Lampen aus Vindonissa: Ein Betrag zur Geschichte von Vindonissa und des antiken Beleuchtungswesens*, Zürich.
- Lungu, V. 1996, *Aegyssus. Documentare Arheologică Preromană*, Peuce 12, 47-101.
- Matei-Popescu, F. 2010, *The Roman Army in Moesia Inferior*, The Centre for Roman Military Studies 7, București.
- Menzel, H. 1969, *Antike Lampen*, Mainz.
- Miltner, F. 1937, *Das Cömenterium der Sieben Schläfer*, *Forschungen in Ephesos*, IV, 2, Viena.
- Mocanu, M., Nuțu, G. 2017, *Late Roman Red Slip Ware from Aegyssus*, *Novensia* 28, 121-140.
- Mocanu, M., Nuțu, G. 2023, *Dining outside the city walls*, in Aparaschivei, D., Bilavski, G., Bacumenco-Pîrnău, L. (eds.), *Varia Archaeologica*, III, Cluj-Napoca, 203-221.
- Mușețeanu, C., Elefterescu, D. 1983, *Lampes romaines de Durostorum*, *Dacia. Révue d'Archéologie et d'Histoire Ancienne*, Nouvelle Série 27 (1-2), 109-128.
- Nicolae, C. 1994, *Câteva opaițe descoperite la Carsium*, *Pontica* 27, 199-207.
- Nuțu, G. 2018, *Live by the Sword and under the Shield. A Note on two Late Antiquity Weapons from Aegyssus*, in: Aparaschivei, D., Bilavski, G. (eds.), *Studia romana et mediaevalia europaensia. Miscellanea in honorem annos LXXXV peragentis professoris emeriti Dan Gh. Teodor oblata*, *Honoraria* 13, București – Brăila, 201-220.
- Nuțu, G. 2021, *A head-vase from Aegyssus and the Athenian connection*, in Mihăilescu-Bîrliba, L., Dumitrache, I. (eds.), *Persevera lucere. Studia in memoriam Octavioani Bounegru*, Wiesbaden, 257-268.

- Nuțu, G., Costea, G. 2010, *Ceramica fină descoperită la Aegyssus*, Peuce, serie nouă 8, 147-162 (DOI: <https://doi.org/10.62781/PeuceSN.08.07>).
- Nuțu, G., Mocanu, M., Radu, G., Grumăzescu, G., Cernamoriți, R., Stănescu, R., Aparaschivei, D., Bilavschi, G., Stanc, S., Dumitrache, I., Radu, T., Suharoschi, A., Pîrnău, R., Roșca, B., Anghel, S., Iordache, G., Dragoș, A., Pop, I., Popa, A., Popovici, A. 2023, 80. *Tulcea, jud. Tulcea [Aegyssus]. Punct: Parcul "Monumentul Independenței" ("Colnicul Hora")*, *Cronica Cercetărilor Arheologice din România*. Campania 2022, 422-427.
- Opațiș, A. 1981, *O nouă unitate militară atestată la Aegyssus*, *Studii și Cercetări de Istorie Veche și Arheologie* 32 (2), 297-298.
- Opațiș, A. 1985, *Einige Beobachtungen zur spätromischen Keramik mit rotem Überzug*, *Dacia. Revue d'Archéologie et d'Histoire Ancienne, Nouveau Série* 29, 153-163.
- Opațiș, A. 1987, *Un dépôt d'amphores découvert à Aegyssus*, *Dacia. Revue d'Archéologie et d'Histoire Ancienne, Nouveau Série* 31, 145-156.
- Opațiș, A., Sion, A., Vasiliu, I. 1980, *Aegyssus '79*, *Materiale și Cercetări Arheologice* 14, 265-275.
- Opriș, I.C., Rațiu, A. 2017, *Capidava II. Building C1 – Contributions to the history of annona militaris in the 6th century*, with contributions by Gândilă, A., Ważny, T., Kuniholm, P.I., Pearson, Ch.L., Rizzo, A., Mak, C., Cluj-Napoca.
- Oziol, T. 1977, *Les lampes du Musée de Chypre*, *Salamine de Chypre* 7, Paris.
- Panaiteescu, A. 1977, *Mormânt de epocă romană de la Tomis*, *Pontica* 10, 339-343.
- Paraschiv, D. 1997, *Descoperiri arheologice de epocă romană la Măcin*, *Pontica* 30, 317-330.
- Paraschiv, D. 2012, *Opațiș/Lamps*, in Iacob, M., Paraschiv, D., Nuțu, G., Mocanu, M. (eds.), *Romani în Pontul stâng în perioada Principatului. Catalogul expoziției/ The Romans in the Left Pontus during the Principate. Exhibition Catalogue*, Tulcea.
- Pârvan, V. 1913, *Cetatea Ulmetum. II.1. Descoperirile campaniei a doua și a treia de săpături din anii 1912 și 1913*, *Analele Academiei Române – Memoriile Secțiunii Istorice* 36, 245-328.
- Perlzweig, J. 1961, *Lamps of the Roman Period: First to Seventh Century after Christ*, *The Athenian Agora* 7, American School of Classical Studies at Athens, New Jersey.
- Popescu, E. 1994, *Les antiquités paléochrétiennes d'Histria*, in Popescu, E. (ed.), *Christianitas Daco-Romana*, Bucharest, 306-396.
- Poulou-Papadimitriou, N. 1986, *Lampes paléochrétiennes de Samos*, *Bulletin de Correspondance Hellénique* 110, 583-610.
- Preda, C. 1980, *Callatis. Necropola romano-bizantină*, București.

- Rusu-Bolindeț, V. 2011, *Lamps from the Early Roman Times at Histria. An Introduction on the Activity of the Lamp Producing Workshops in Roman Dobrogea*, in Angelescu, M.V., Achim, I., Bâltâc, A., Rusu-Bolindeț, V., Bottez, V. (eds.), *Antiquitas Istro-Pontica Mélanges d'Archéologie et d'Histoire Ancienne offerts à Alexandru Suceveanu*, Cluj-Napoca, 401-420.
- Sanie, S. 1981, *Civilizația Romană la Est de Carpați și Romanitatea pe Teritoriul Moldovei (sec. II î.e.n.-III e.n.)*, Iași.
- Sapouna, P. 1998, *Die Bildlampen römischer Zeit aus der Idäischen Zeusgrotte auf Kreta*, British Archaeological Reports. International Series 696.
- Sauciuc-Săveanu, T. 1924, *Callatis I. Raport preliminar. Fouilles et Reserches de L'Année 1924*, Dacia. *Revue d'Archéologie et d'Histoire Ancienne*, I, 108-165.
- Scorpan, C. 1979, *Descoperiri arheologice diverse de la Sacidava*, *Pontica* 11, 155-180.
- Severeanu, G. 1936, *Lampes en terre-cuite appartenant aux collection du Musee Municipal de Bucarest et du Dr. Severeano*, *Revista Muzeului și Pinacoteiei Municipiului București* 1-2, 39-87.
- Stănescu, R.-O. 2018, *Amphorae ex Aegyso. Fragments from older excavations*, *Peuce*, serie nouă 16, 205-226 (DOI: <https://doi.org/10.62781/PeuceSN.16.07>).
- Streinu, A., Pîrvulescu, D. 2020, *New consideration on the late roman lamps from the Maria and dr. George Severeanu collection*, *Revista de Cercetări Arheologice și Numismatice* 6, 177-196.
- Suceveanu, A. 1982, *Histria VI. Les thermes romaines*, Bucarest-Paris.
- Suceveanu, A., Barnea, A. 1991, *La Dobroudja Romaine*, București.
- Topoleanu, F. 1984, *Noi descoperiri arheologice la Isaccea*, *Peuce* 9, 187-205, 585-595.
- Topoleanu, F. 2012, *Lămpile antice din colecțiile Muzeului Județean de Istorie și Arheologie Prahova – Ploiești*, Biblioteca Istro-Pontica. Seria Patrimonium 6, Ploiești.
- Topoleanu, F. 2016, *Oil Lamps from Troesmis*, in Alexandrescu, C.-G. (ed.), *Troesmis – A Changing landscape. Romans and the Others in the Lower Danube Region in the First Century BC – Thirt Century AD*, Biblioteca Istro-Pontica. Seria Arheologie 12, Mega Publishing House, Cluj-Napoca, 68-116.
- Topoleanu, F. 2019, *An aspect of local lamp production in the western Pontic region: the case of lamps of types Hayes/Saraçhane 9 and 10*, *Polish Archaeology in the Mediterranean* 28(1), 341-347.
- Topoleanu, F. 2021, *New data concerning Roman "stepped pit" graves in Northern Dobruja*, *Peuce*, serie nouă 19, 143-180 (DOI: <https://doi.org/10.62781/PeuceSN.19.06>).
- Topoleanu, F. 2000 *Ceramica romană și romano-bizantină de la Halmyris (sec. I – VII d. Chr.)*, Tulcea.

- Topoleanu, F., Croitoru, C. 2015, *Lămpile antice din colecția Muzeului Brăilei „Carol I”, Muzeul Brăilei „Carol I”, Brăila.*
- Vitelli, K. 1982, *The Lamps*, in Bass, G.F., von Doornink jr., F.H., *Yassi Ada, I, A Seventh Century Byzantine Shipwreck*, Texas, 189-201.
- Waldhauer, O. 1914, *Die Antiken Taulampen, Kaiserliche Ermitage*, St. Petersburg.
- Zahariade, M. 2006, *Scythia Minor. A history of a Later Roman Province (284–681)*, Amsterdam.

- Владкова, П. 2011, *Античен Производствен център При Павликени (Долна Мизия), Велико Търново.*
- Илиев, Г. 2010, *Калъпи за производство на глинени лампи от Стара Загора*. In: Борисов, Б. (ed.). *Великотърновският университет “Св. Кирил и Методий” и българската археология*, Vol. 1, Велико Търново, 249-254.
- Кузманов, Г. 1992, *Антични лампи. Колекция на Националния археологически музей, София.*
- Кузманов, Г., бѣчваров, И. 1986, *Колекцията от антични лампи в силистренския Музей*, Известия на Народния Музей Варна 22 (37), 43-62.
- Кузманов, Г., Минчев, А. 2018, *Антични лампи: Колекция на Регионален Исторически музей Варна, София.*
- Тончева, Г. 1953, *Керамична работилница край с. Кранево*, Известия на Археологическо Дружество в гр. Сталин 9, 81-87.
- Торбов, Н. 2022, *Антични Лампи от Тепитории на провинции Мизия и Крайбрежна Дакия (И-ВИ в.)*, София.
- Чичикова, М. 1961, *Антични лампи с марки от Одесос*, Изследвания в памет на Карел Шкорпил, София.

